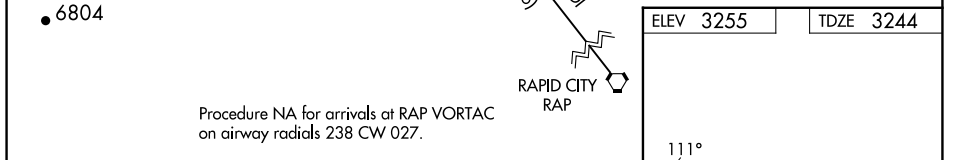
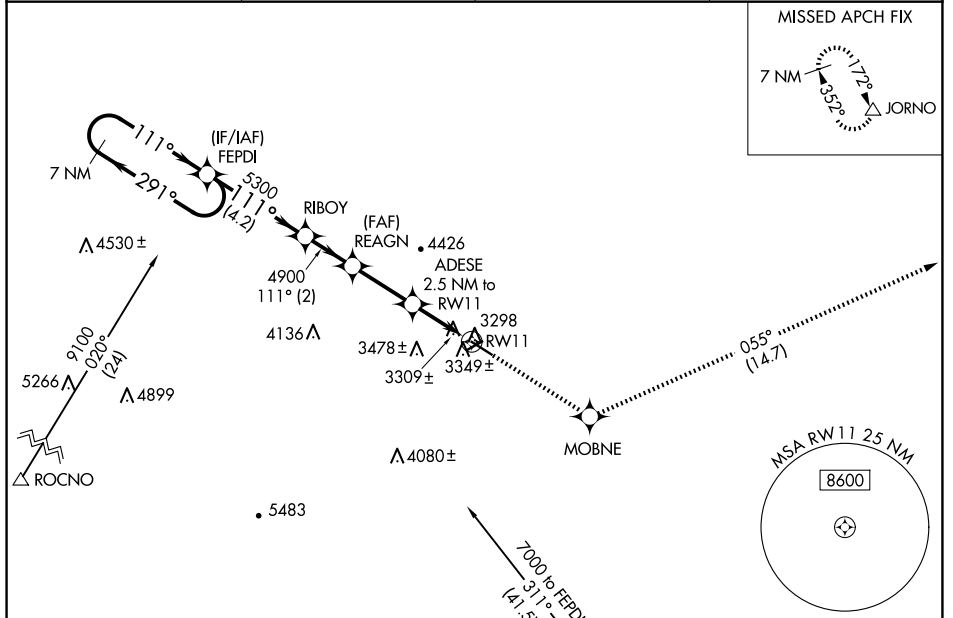


WAAS CH <b>53432</b> <b>W11A</b>	APP CRS <b>111°</b>	Rwy Idg TDZE Apt Elev	<b>5100</b> <b>3244</b> <b>3255</b>
--	------------------------	-----------------------------	---

# RNAV (GPS) RWY 11

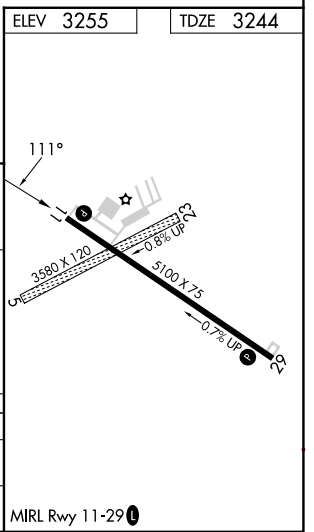
STURGIS MUNI (49B)

RNP APCH - GPS.		MISSED APPROACH: Climb to 7000 direct MOBNE and on track 055° to JORN0 and hold.	
▼ Rwy 11 helicopter visibility reduction below ¾ SM NA.			
AWOS-3P <b>119.275</b>	ELLSWORTH APP CON ★ <b>119.5 259.1</b>	GCO <b>121.725</b>	UNICOM <b>122.8 (CTAF) 0</b>



VGSI and descent angles not coincident (VGSI Angle 3.00/TCH 22).

7 NM Holding Pattern	FEPDI	RIBOY	REAGN	ADESE 2.5 NM to RW11	JORN0
6600	5300	4900	4080		
← 291°	← 111°	← 111°	3.00° TCH 50		
4.2 NM		2 NM		2.5 NM	
CATEGORY	A	B	C	D	
LP MDA	3620-1 376 (400-1)			NA	
LNAV MDA	3660-1 416 (500-1)		3660-1½ 416 (500-1½)	NA	



NC-1, 11 JUN 2026 to 09 JUL 2026

NC-1, 11 JUN 2026 to 09 JUL 2026