

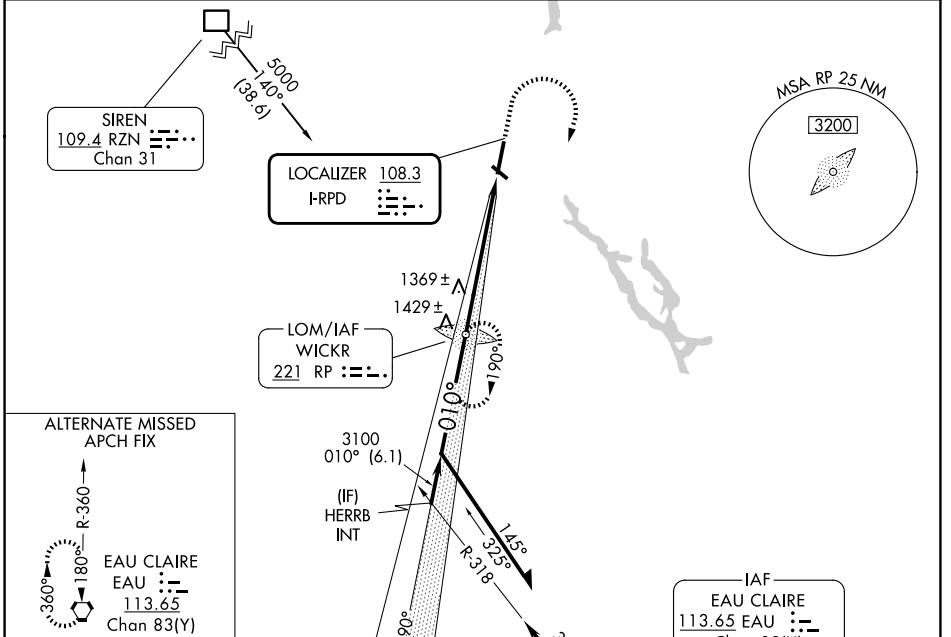
LOC I-RPD 108.3	APP CRS 010°	Rwy Ldg 6500	TDZE 1102
		Apt Elev 1109	

ILS or LOC RWY 1

RICE LAKE RGNL/CARL'S FLD (RPD)

ADF required. From RZN DME: RNAV 1-GPS required.	MALSR 	MISSED APPROACH: Climb to 2200 then climbing right turn to 3200 direct WICKR LOM and hold.
 Circling Rwy 13, 31 NA at night.		

AWOS-3 120.525	MINNEAPOLIS CENTER 125.3 335.6	UNICOM 122.7 (CTAF)
--------------------------	--	--------------------------------



ALTERNATE MISSED APCH FIX

EAU CLAIRE
EAU
113.65
Chan 83(Y)

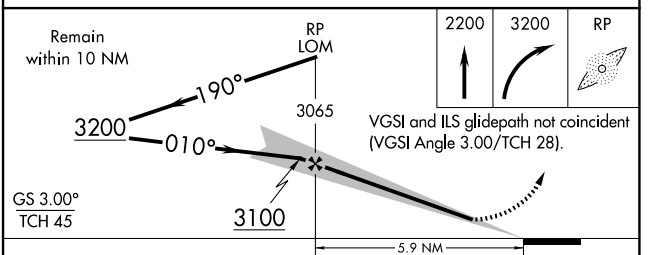
↑ R-360
180°
360°

ELEV 1109 TDZE 1102

REIL Rws 13, 31
REIL Rwy 19
HIRL Rwy 1-19
MIRL Rwy 13-31

FAF to MAP 5.9 NM

Knots	60	90	120	150	180
Min:Sec	5:54	3:56	2:57	2:22	1:58



CATEGORY	A	B	C	D
S-ILS 1	1302-1/2		200 (200-1/2)	
S-LOC 1	1620-1/2	518 (600-1/2)	1620-1 518 (600-1)	1620-1 1/4 518 (600-1 1/4)
CIRCLING	1620-1 511 (600-1)	1740-1 631 (700-1)	1740-1 3/4 631 (700-1 3/4)	1940-2 3/4 831 (900-2 3/4)

EC-3, 11 JUN 2026 to 09 JUL 2026

EC-3, 11 JUN 2026 to 09 JUL 2026