


APP CRS	Rwy Ldg	4001
357°	TDZE	588
	Apt Elev	590

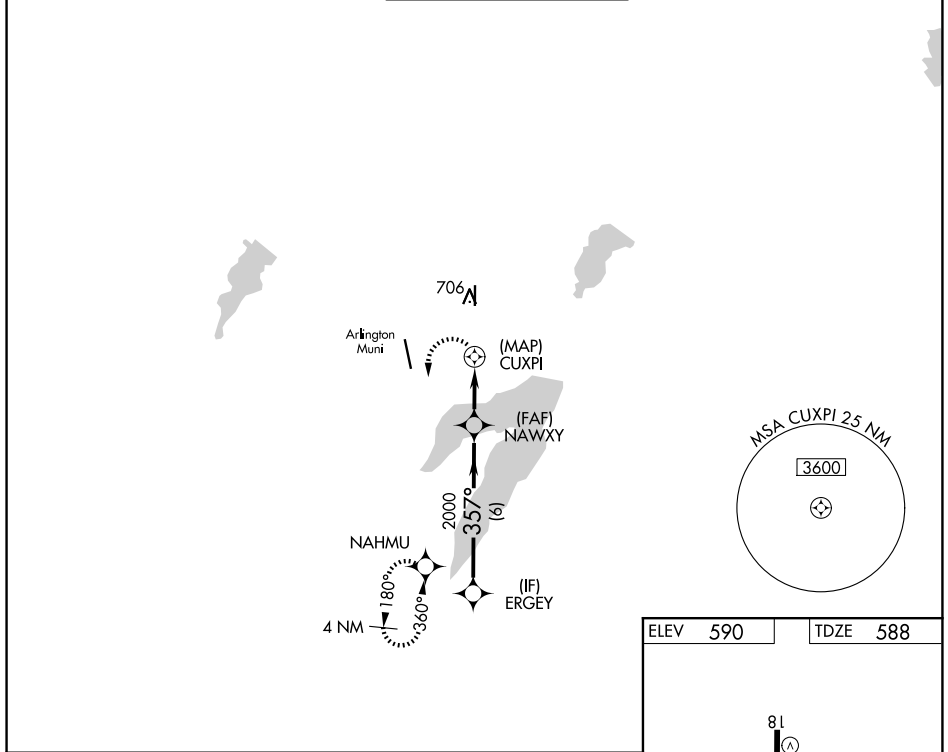
AL-9209 (FAA)

RNAV (GPS) RWY 36

GRAND PRAIRIE MUNI (GPM)

RADAR required. RNP APCH - GPS.		MISSED APPROACH: Climbing left turn to 2400 direct NAHMU and hold.
	Circling Rwy 18 NA at night.	

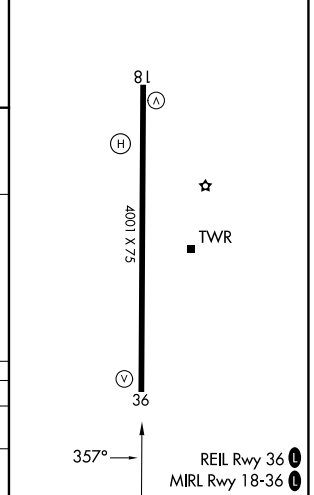
AWOS-3P 118.475	LONE STAR APP CON 135.975 379.9	GRAND PRAIRIE TOWER ★ 128.55 (CTAF) 0	GND CON 121.15	UNICOM 123.075
---------------------------	---	--	--------------------------	--------------------------



ELEV	590	TDZE	588
------	------------	------	------------

VGSI and descent angles not coincident (VGSI Angle 4.00/TCH 37).

ERGEY	NAWXY	CUXPI	NAHMU
2000	2000	3.04° TCH 37	2400
6 NM	2.5 NM	1.9 NM	
CATEGORY	A	B	C
LNVA MDA	1020-2½	432 (500-2½)	NA
CIRCLING	1100-2½ 510 (600-2½)	1280-2½ 690 (700-2½)	NA



SC-2, 11 JUN 2026 to 09 JUL 2026

SC-2, 11 JUN 2026 to 09 JUL 2026