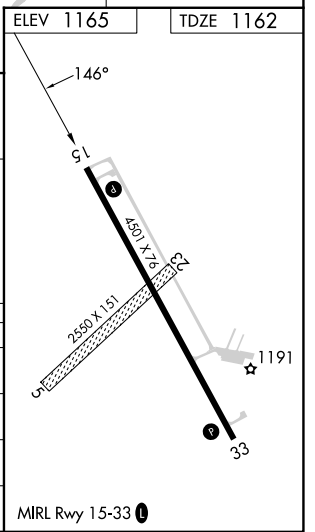
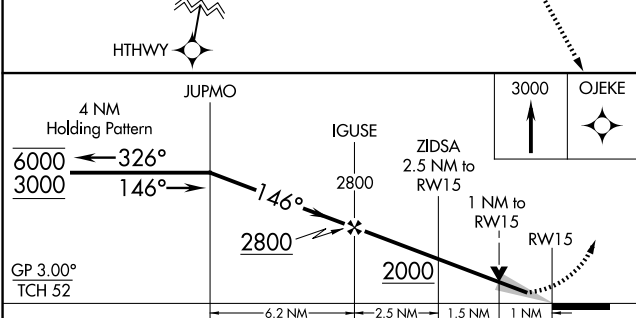
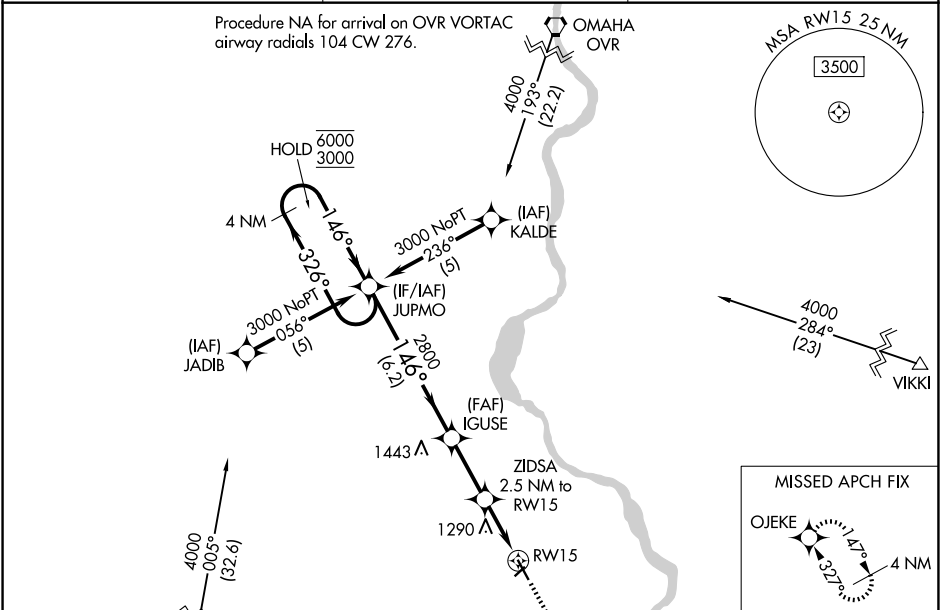


| | | | |
|--|------------------------|-----------------------------|---|
| WAAS CH 86407 W15A | APP CRS 146° | Rwy Ldg TDZE Apt Elev | 4501 1162 1165 |
|--|------------------------|-----------------------------|---|

RNAV (GPS) RWY 15

NEBRASKA CITY MUNI (AFK)

| | | |
|---|--|---|
| RNP APCH - GPS. | | MISSED APPROACH: Climb to 3000 direct OJEKE and hold. |
| Circling NA to Rws 5 and 23. For uncompensated Baro-VNAV systems, LNAV/VNAV NA below -17°C or above 54°C. | | |
| AWOS-3PT 128.325 | OMAHA APP CON 135.875 354.05 | UNICOM 122.7 (CTAF) 0 |



| CATEGORY | A | B | C | D |
|--------------|--------|-------------|---|----|
| LPV DA | 1362-1 | 200 (200-1) | | NA |
| LNAV/VNAV DA | 1431-1 | 269 (300-1) | | NA |
| LNAV MDA | 1540-1 | 378 (400-1) | | NA |
| CIRCLING | 1640-1 | 475 (500-1) | | NA |

NC-2, 11 JUN 2026 to 09 JUL 2026

NC-2, 11 JUN 2026 to 09 JUL 2026