

WAAS CH 87121 W18A	APP CRS 177°	Rwy Ldg TDZE Apt Elev	6002 297 317
--	------------------------	-----------------------------	---

RNAV (GPS) RWY 18

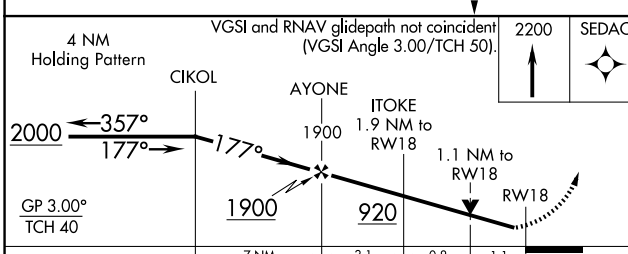
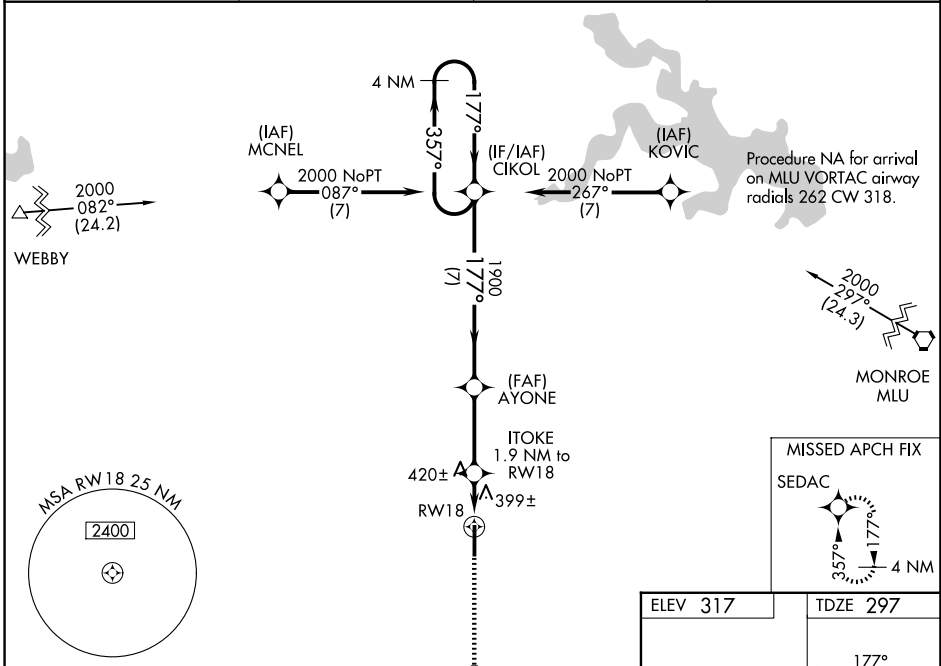
RUSTON RGNL (RSN)

RNP APCH - GPS.

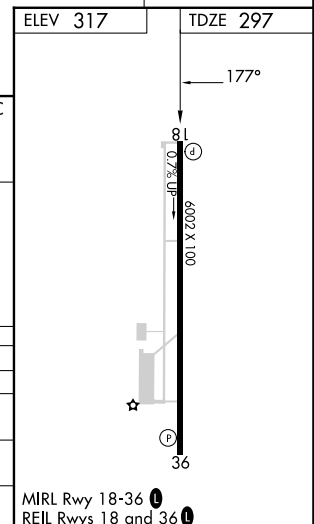
⚠ Baro-VNAV NA when using Monroe altimeter setting. For uncompensated Baro-VNAV systems, LNAV/VNAV NA below -15°C or above 42°C. Rwy 18 helicopter visibility reduction below 3/4 SM NA. VDP NA with Monroe altimeter setting. When local altimeter setting not received, use Monroe altimeter setting and increase all DA 97 feet and all MDA 100 feet, increase LPV and LNAV/VNAV all Cats visibility 1/4 SM, and Circling Cat C and D visibility 1/2 SM.

MISSED APPROACH:
Climb to 2200 direct
SEDAC and hold.

AWOS-3PT 119.525	MONROE APP CON* 126.9 307.9	CLNC DEL 118.8	UNICOM 122.7 (CTAF) 0
----------------------------	---------------------------------------	--------------------------	---------------------------------



CATEGORY	A	B	C	D
LPV DA		547-7/8	250 (300-7/8)	
LNAV/VNAV DA		723-1 1/2	426 (500-1 1/2)	
LNAV MDA	680-1	383 (400-1)	680-1 1/8	383 (400-1 1/8)
CIRCLING	760-1 443 (500-1)	780-1 463 (500-1)	900-1 1/2 583 (600-1 1/2)	960-2 643 (700-2)



SC-4, 11 JUN 2026 to 09 JUL 2026

SC-4, 11 JUN 2026 to 09 JUL 2026