

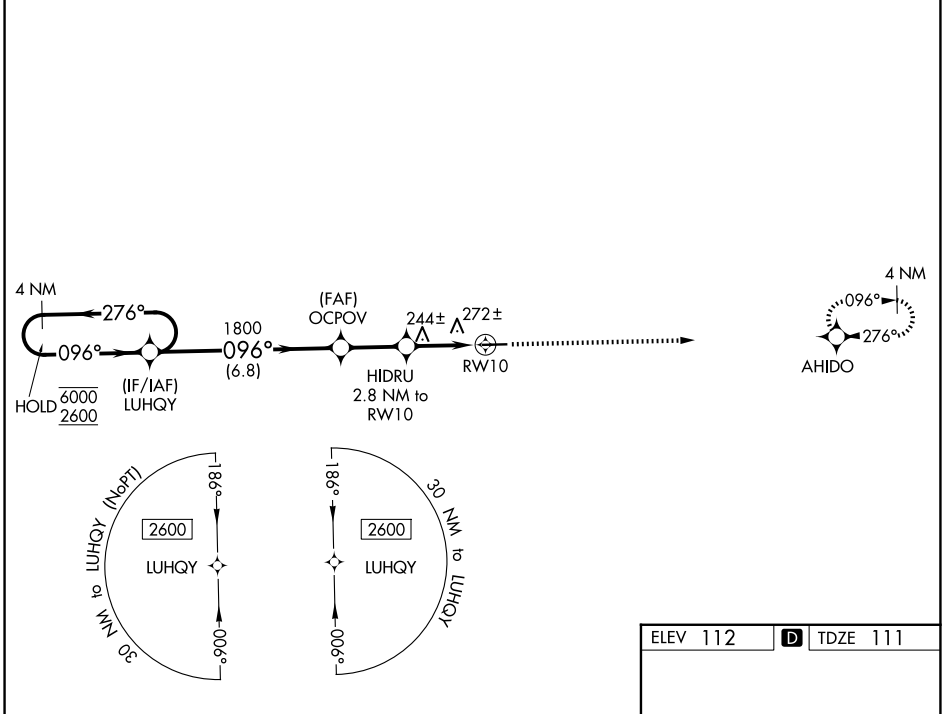
WAAS CH 45914 W10A	APP CRS 096°	Rwy Ldg TDZE Apt Elev	4651 111 112
--	------------------------	-----------------------------	---

RNAV (GPS) RWY 10

CLAXTON-EVANS COUNTY (C'WV)

RNP APCH - GPS.	MISSED APPROACH: Climb to 2600 direct AHIDO and hold.
Rwy 10 helicopter visibility reduction below 3/4 SM NA.	

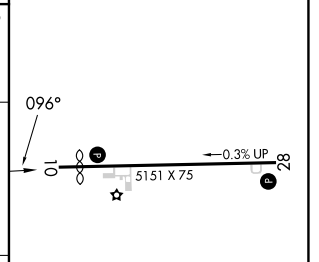
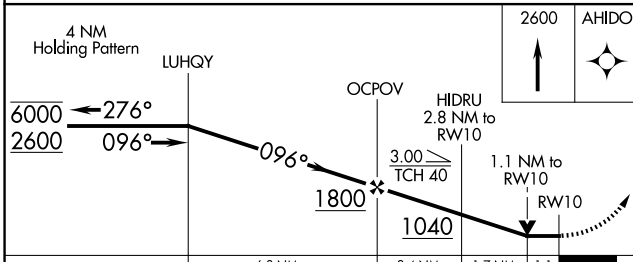
AWOS-3 120.075	JACKSONVILLE CENTER 132.925 363.2	UNICOM 122.8 (CTAF)
--------------------------	---	-------------------------------



SE-4, 11 JUN 2026 to 09 JUL 2026

SE-4, 11 JUN 2026 to 09 JUL 2026

ELEV 112	TDZE 111
----------	----------



CATEGORY	A	B	C	D
LP MDA	500-1	389 (400-1)	500-1 1/8	389 (400-1 1/8)
LNAV MDA	540-1	429 (500-1)	540-1 1/4	429 (500-1 1/4)
CIRCLING	580-1 468 (500-1)	780-1 668 (700-1)	860-2 1/4 748 (800-2 1/4)	860-2 1/2 748 (800-2 1/2)

MIRL Rwy 10-28
REIL Rwys 10 and 28