

APP CRS <b>323°</b>	Rwy Ldg TDZE Apt Elev	<b>N/A</b> <b>N/A</b> <b>5335</b>
------------------------	-----------------------------	-----------------------------------------

# RNAV (GPS)-A

ARCO-BUTTE COUNTY (AOC)

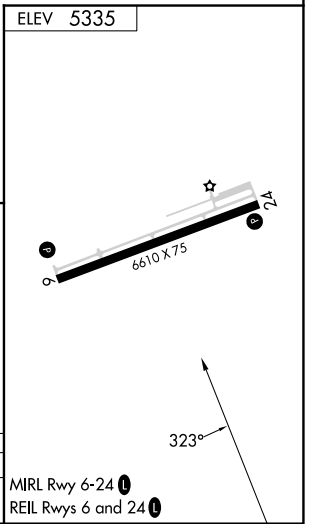
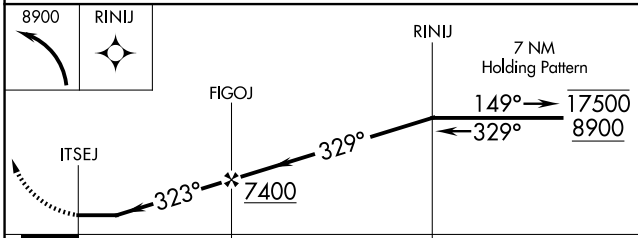
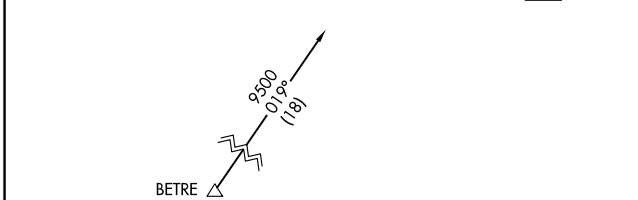
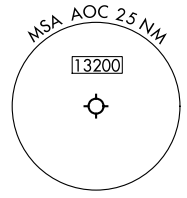
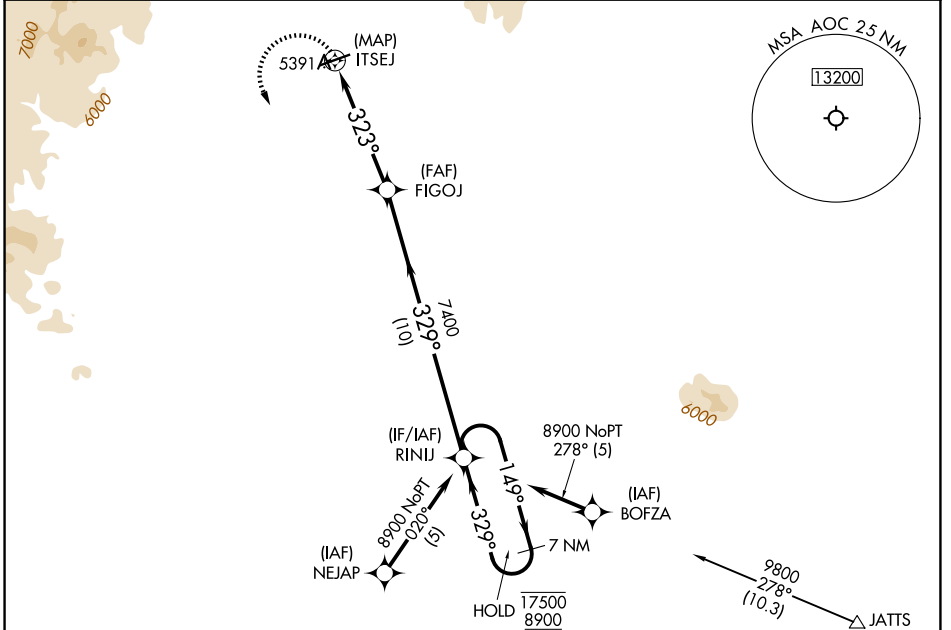
RNP APCH.

**NA** Circling NA for Cats C and D northwest of Rwy 6-24. When local altimeter setting not received, use Pocatello Rgnl altimeter setting and increase all MDAs 600 feet. Increase Cat A/B visibility to 1¼ SM and Cat C visibility to 3 SM.

**MISSED APPROACH:** Climbing left turn to 8900 direct RINIJ and hold, continue climb in hold to 8900.

SALT LAKE CENTER  
**128.35 239.25**

UNICOM  
**122.8 (CTAF)**



CATEGORY	A	B	C	D
CIRCLING	5920-1	585 (600-1)	5940-1¼ 605 (700-1¼)	6680-3 1345 (1400-3)

NW-1, 11 JUN 2026 to 09 JUL 2026

NW-1, 11 JUN 2026 to 09 JUL 2026