

LOC I-TVR <b>109.7</b>	APP CRS <b>357°</b>	Rwy Ldg <b>5002</b> TDZE <b>86</b> Apt Elev <b>86</b>
---------------------------	------------------------	---

# ILS or LOC RWY 36

VICKSBURG TALLULAH RGNL (TVR)

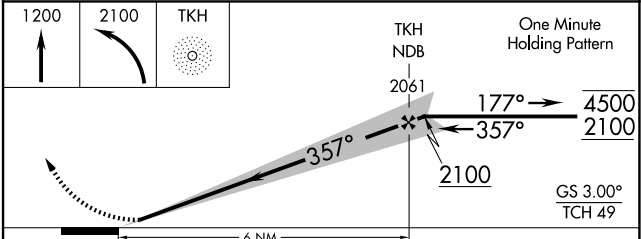
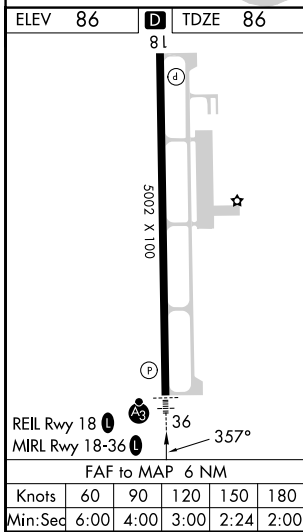
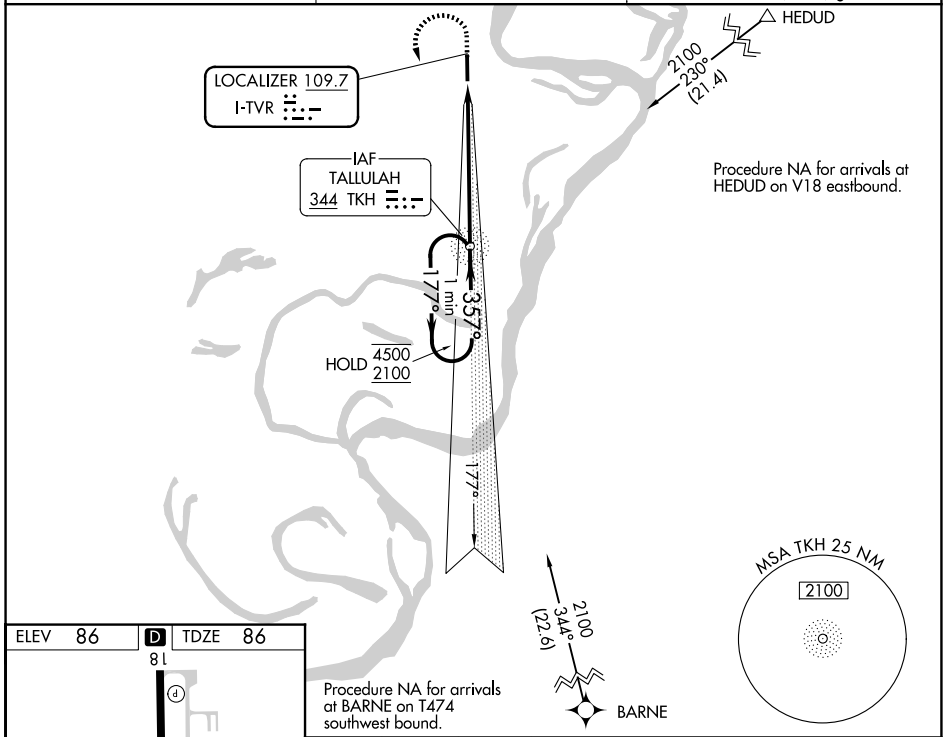
RNP APCH - GPS required for procedure entry at BARNE.

ADF required.

**▼** For inop ALS when using Vicksburg Muni, MS altimeter setting, increase S-LOC Cats C and D visibility to 1 3/8 SM. When local altimeter setting not received, use Vicksburg Muni, MS altimeter setting: increase S-ILS 36 DA to 309 feet; increase all MDAs 40 feet and visibility S-LOC 36 Cats C/D 1/8 SM and Circling Cats C/D 1/4 SM.

SSALR MISSED APPROACH: Climb to 2100 then climbing left turn to 2100 direct TKH NDB and hold.

ASOS <b>118.525</b>	MEMPHIS CENTER <b>132.5 259.1</b>	UNICOM <b>123.0</b> (CTAF)
------------------------	--------------------------------------	-------------------------------



CATEGORY	A	B	C	D
S-ILS 36	286-1/2		200 (200-1/2)	
S-LOC 36	540-1/2	454 (500-1/2)	540-7/8	454 (500-7/8)
CIRCLING	540-1	454 (500-1)	720-1 3/4 634 (700-1 3/4)	720-2 634 (700-2)

SC-4, 11 JUN 2026 to 09 JUL 2026

SC-4, 11 JUN 2026 to 09 JUL 2026