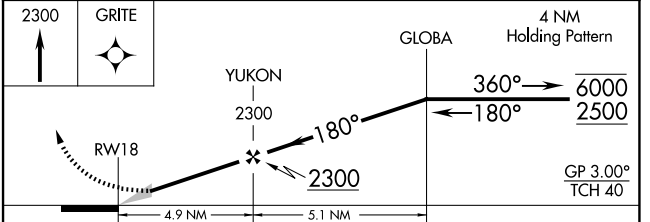
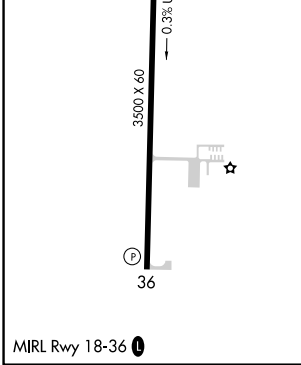
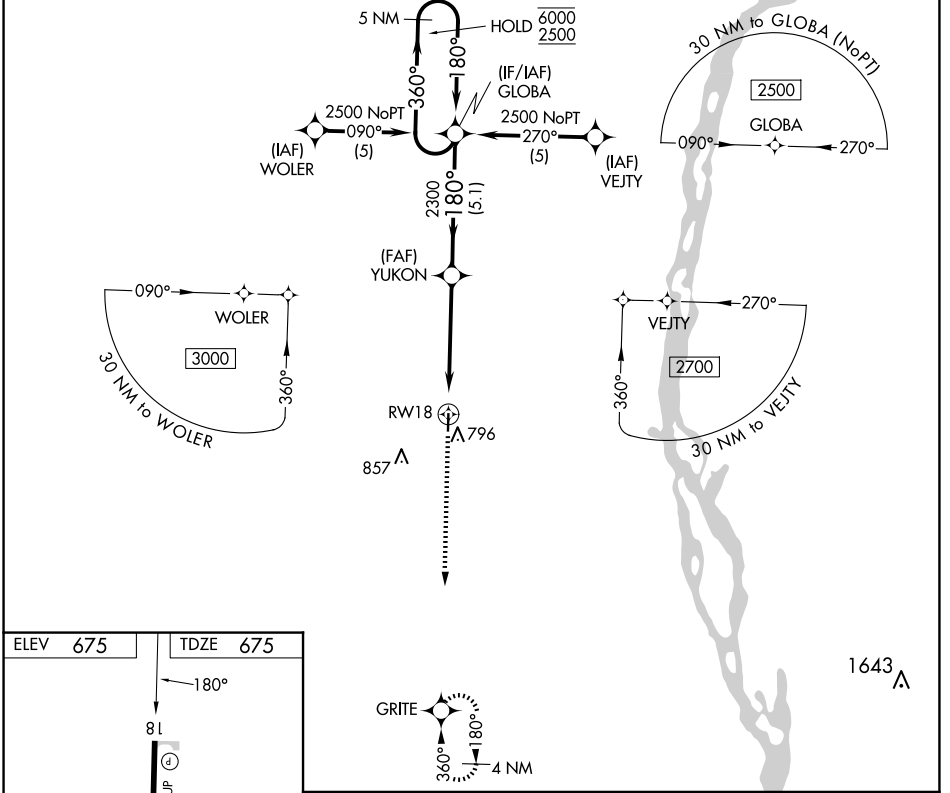


WAAS CH 50401 W18A	APP CRS 180°	Rwy Ldg TDZE Apt Elev	3500 675 675
--	------------------------	-----------------------------	---

RNAV (GPS) RWY 18

LEWIS COUNTY RGNL (6M6)

RNP APCH.		MISSED APPROACH: Climb to 2300 direct GRITE and hold.
UIN ASOS 121.425	KANSAS CITY CENTER 126.225 317.775	UNICOM 122.7 (CTAF) 0



CATEGORY	A	B	C	D
LPV DA	1035-1¼	360 (400-1¼)		NA
LNAV/VNAV DA	1082-1½	407 (500-1½)		NA
LNAV MDA	1220-1	545 (600-1)		NA

NC-3, 11 JUN 2026 to 09 JUL 2026

NC-3, 11 JUN 2026 to 09 JUL 2026