

WAAS CH 58138 W15A	APP CRS 148°	Rwy Ldg TDZE 1067 Apt Elev 1067	3999
---------------------------------	------------------------	---	-------------

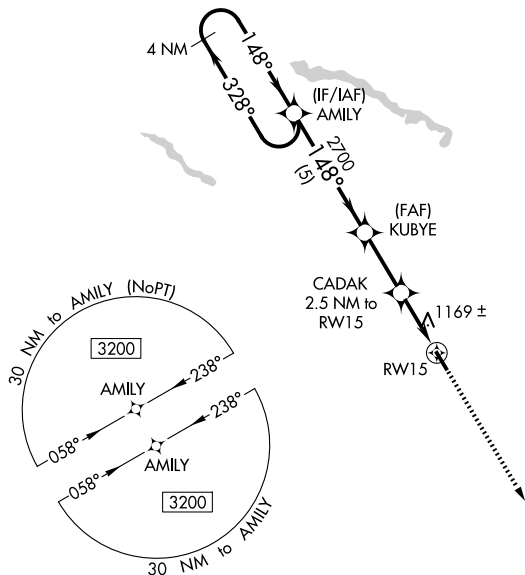
RNAV (GPS) RWY 15

ST JAMES MUNI (JYG)

⚠ DME/DME RNP-0.3 NA. For uncompensated Baro-VNAV systems, procedure NA below -17°C (2°F) or above 54°C (130°F). Baro-VNAV and VDP NA when using New Ulm altimeter setting. When local altimeter not received, use New Ulm, MN altimeter setting and increase LPV DA to 1372 feet and LNAV/VNAV DA to 1530 feet, and all MDA 60 feet.

MISSED APPROACH: Climb to 3200 direct PUGJU and hold.

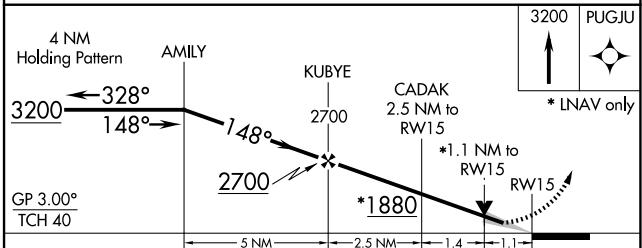
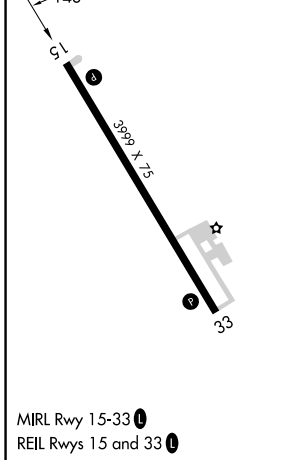
AWOS-3PT 123.7	MINNEAPOLIS CENTER 127.75 257.7	GCO 121.725	CTAF 122.9 Ⓛ
--------------------------	---	-----------------------	-------------------------------



NC-1, 11 JUN 2026 to 09 JUL 2026

NC-1, 11 JUN 2026 to 09 JUL 2026

ELEV 1067	TDZE 1067
-----------	-----------



CATEGORY	A	B	C	D
LPV DA	1317-1	250 (300-1)		NA
LNAV/VNAV DA	1475-1 ³ / ₈	408 (500-1 ³ / ₈)		NA
LNAV MDA	1420-1	353 (400-1)		NA
CIRCLING	1500-1 433 (500-1)	1520-1 453 (500-1)		NA