

WAAS CH 56309 W03A	APP CRS 029°	Rwy Ldg 5498 TDZE 940 Apt Elev 948
----------------------------------------	------------------------	---------------------------------------------------------------

RNAV (GPS) RWY 3

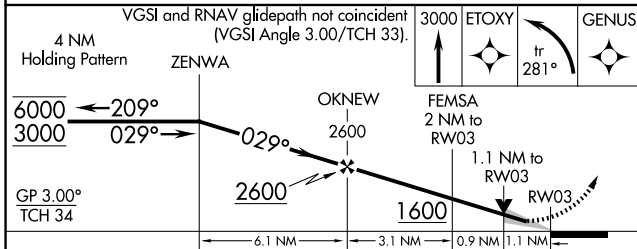
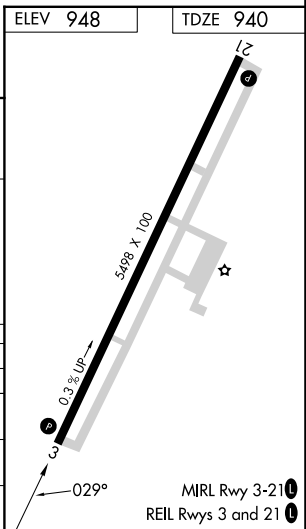
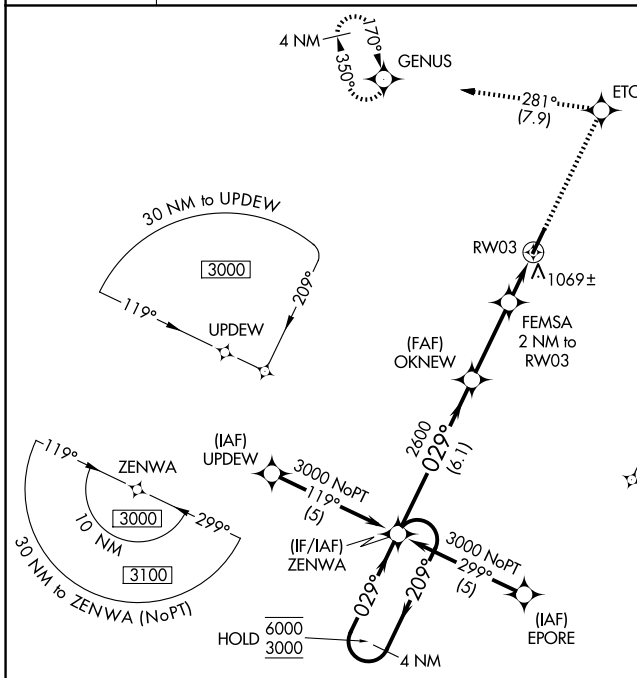
GEORGETOWN-SCOTT COUNTY RGNL (27K)

RNP APCH - GPS.

⚠ For uncompensated Baro-VNAV systems, LNAV/VNAV NA below -16°C or above 54°C. Baro-VNAV and VDP NA when using LEX altimeter setting. When local altimeter setting not received, use LEX altimeter setting: increase LPV DA to 1178 feet; increase LNAV/VNAV DA to 1358 feet and all visibilities ½ SM; increase all MDAs 40 feet and LNAV visibility Cat C/D ⅓ SM, and Circling visibility Cat D ¼ SM

MISSED APPROACH: Climb to 3000 direct ETOXY and left turn on track 281° to GENUS and hold, continue climb-in-hold to 3000.

AWOS-3 119.975	LEXINGTON APP CON 120.15 259.3 (040°-220°) 120.75 298.9 (221°-039°)	CLNC DEL 127.425	UNICOM 123.0 (CTAF) 📶
--------------------------	--------------------------------------------------------------------------------------	----------------------------	----------------------------------------



CATEGORY	A	B	C	D
LPV DA		1140-¾	200 (200-¾)	
LNAV/VNAV DA		1320-1	380 (400-1)	
LNAV MDA		1320-1	380 (400-1)	
CIRCLING	1420-1	472 (500-1)	1560-1¾ 612 (700-1¾)	1660-2¼ 712 (800-2¼)

SE-1, 11 JUN 2026 to 09 JUL 2026

SE-1, 11 JUN 2026 to 09 JUL 2026