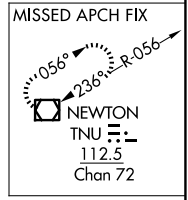
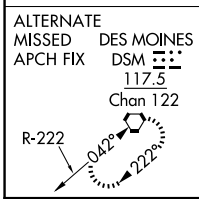
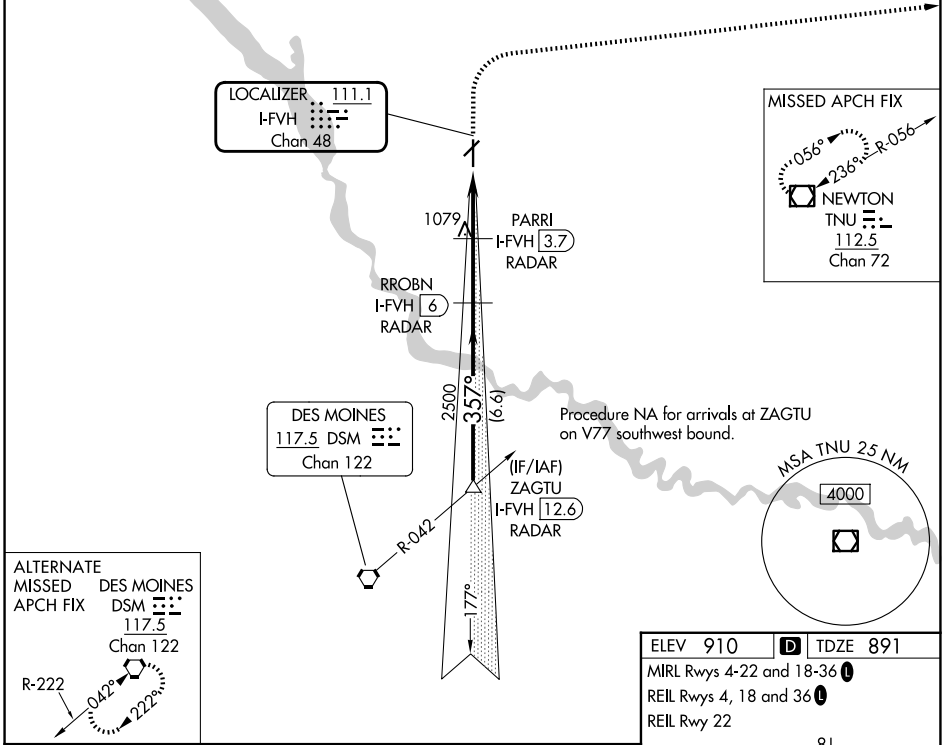


LOC/DME I-FVH 111.1 Chan 48	APP CRS 357°	Rwy Ldg TDZE 5500 891	Apt Elev 910
--	------------------------	-----------------------------	-----------------

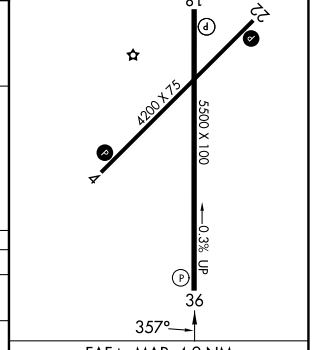
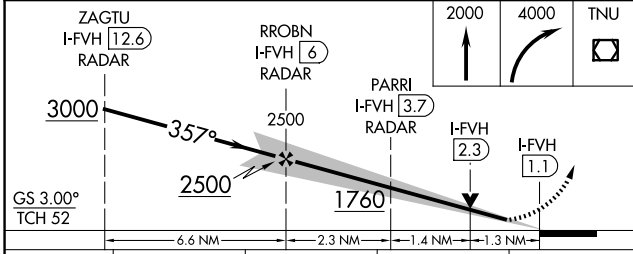
ILS or LOC RWY 36

ANKENY RGNL (IKV)

DME or RADAR required.		MISSED APPROACH: Climb to 2000 then climbing right turn to 4000 direct TNU VOR/DME and hold.
AWOS-3 119.175	DES MOINES APP CON 123.9 307.15	UNICOM 122.9 (CTAF)



ELEV 910	D TDZE 891
MRL Rwy 4-22 and 18-36	
REIL Rwy 4, 18 and 36	
REIL Rwy 22	



CATEGORY	A	B	C	D
S-ILS 36		1091-3/4	200 (200-3/4)	
S-LOC 36	1340-1	449 (500-1)	1340-1 3/8	449 (500-1 3/8)
CIRCLING	1560-1	650 (700-1)	1560-1 3/8	1760-2 3/4
			650 (700-1 3/8)	850 (900-2 3/4)

NC-3, 11 JUN 2026 to 09 JUL 2026

NC-3, 11 JUN 2026 to 09 JUL 2026