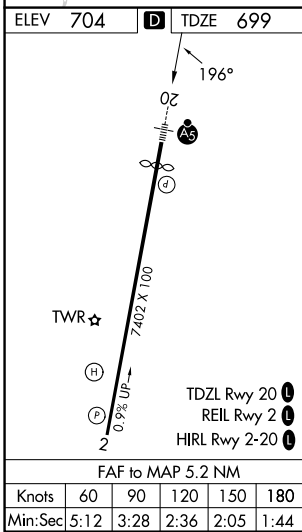
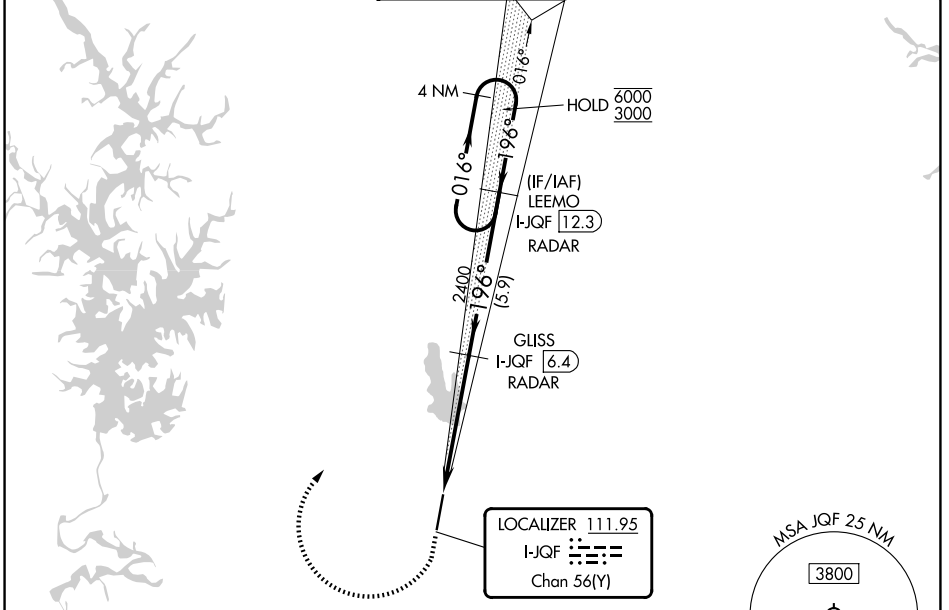


LOC/DME I-JQF <b>111.95</b> Chan <b>56(Y)</b>	APP CRS <b>196°</b>	Rwy Ldg TDZE Apt Elev <b>6350</b> <b>699</b> <b>704</b>
---	------------------------	--

# ILS or LOC RWY 20

CONCORD-PADGETT RGNL (JQF)

RNP APCH - GPS.		<p>▼ Rwy 20 helicopter visibility reduction below 3/4 SM NA. Inop table does not apply to S-ILS-20. For inop ALS, increase S-LOC-20 Cats A and B visibility to 1 SM, Cats C and D visibility to 1 1/2 SM.</p> <p>▲ NA</p>	MALSR	MISSED APPROACH: Climb to 1300 then climbing right turn to 3000 direct LEEMO and hold.
ATIS <b>133.675</b>	CHARLOTTE APP CON <b>128.325 307.8</b>		CONCORD TOWER ★ <b>134.65 (CTAF)</b>	GND CON <b>121.85</b>



1300 ↑ 3000 LEEMO I-JQF [12.3]	GLISS I-JQF [6.4] RADAR	LEEMO I-JQF [12.3] RADAR	4 NM Holding Pattern	
			6000	3000
I-JQF [1.2]    I-JQF [2.8]    2400    196°    2400		1.6 NM    3.6 NM    5.9 NM	GS 3.00° TCH 44	
CATEGORY    A    B    C    D				
S-ILS 20		1041-3/4		342 (400-3/4)
S-LOC 20		1260-3/4    561 (600-3/4)		1260-1/4    561 (600-1/4)
CIRCLING		1300-1    596 (600-1)		1480-2 1/4    1480-2 1/2 776 (800-2 1/4)    776 (800-2 1/2)

SE-2, 11 JUN 2026 to 09 JUL 2026

SE-2, 11 JUN 2026 to 09 JUL 2026