

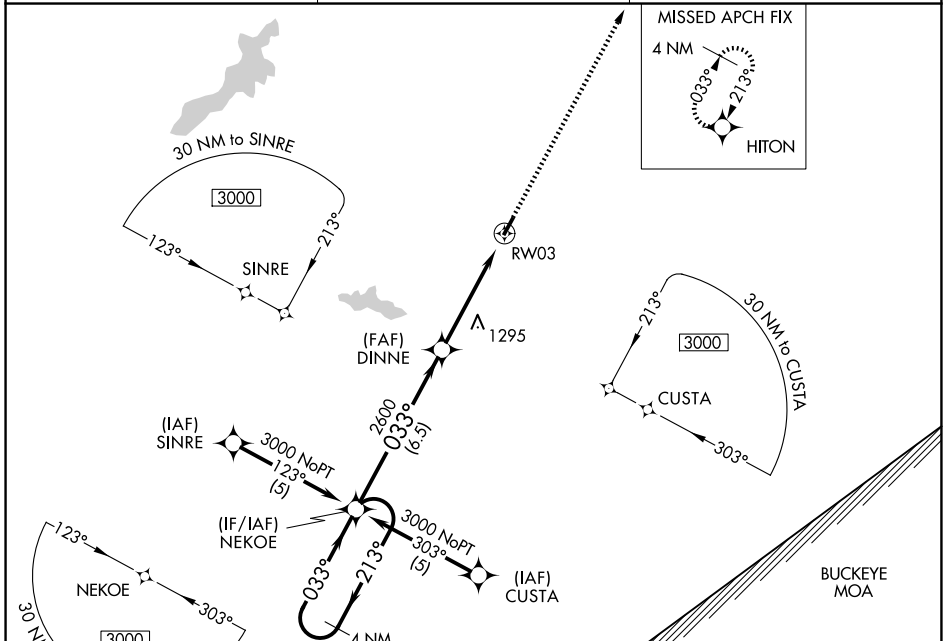
APP CRS	Rwy Ldg	<b>3579</b>
<b>033°</b>	TDZE	<b>1033</b>
	Apt Elev	<b>1033</b>

# RNAV (GPS) RWY 3

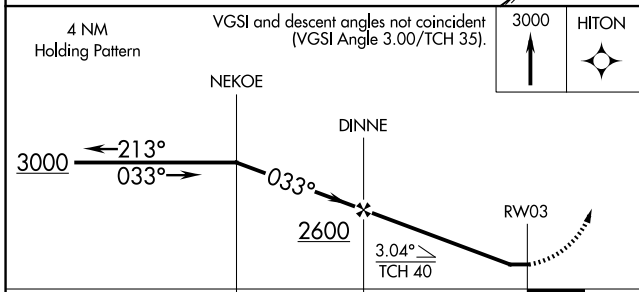
CLINTON FLD (I66)

RNP APCH - GPS.		MISSED APPROACH: Climb to 3000 direct HITON and hold.
<p><b>▽</b> When local altimeter setting not received, use ILLM altimeter setting and increase all MDAs 20 feet and LNAV visibility Cat C 1/8 SM. Rwy 3 helicopter visibility reduction below 3/4 SM NA.</p> <p><b>△</b> NA</p>		

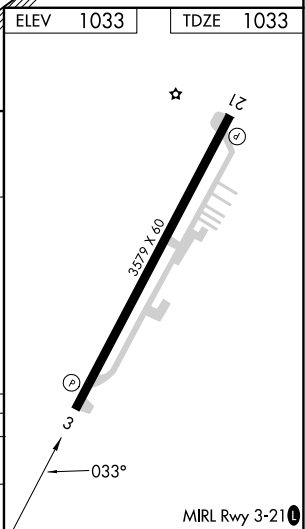
AWOS-3 <b>124.175</b>	COLUMBUS APP CON <b>118.85 269.275</b>	UNICOM <b>122.725 (CTAF)</b>
--------------------------	---	---------------------------------



ELEV	1033	TDZE	1033
------	------	------	------



CATEGORY	A	B	C	D
LNAV MDA	1600-1	567 (600-1)	1600-1 1/8 567 (600-1 1/8)	NA
CIRCLING	1740-1	707 (800-1)	1740-2 707 (800-2)	NA



EC-2, 11 JUN 2026 to 09 JUL 2026

EC-2, 11 JUN 2026 to 09 JUL 2026