

APP CRS	Rwy Ldg	4000
173°	TDZE	915
	Apt Elev	915

RNAV (GPS) RWY 17

LAWRENCE SMITH MEML (L.R.Y)

RNP APCH.

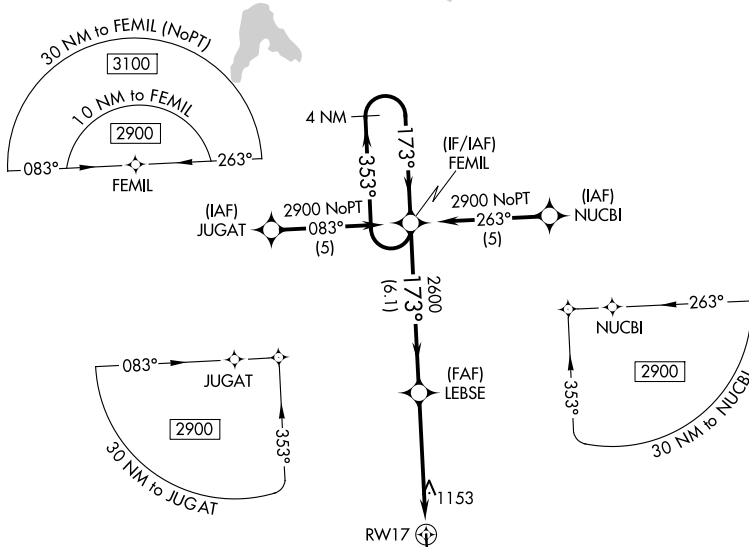
⚠ When local altimeter setting not received, use Kansas City Downtown/Wheeler Fld altimeter setting: increase all MDAs 100 feet and visibility Cat C ¼ mile. Procedure NA at night. Rwy 17 helicopter visibility reduction below 1 SM NA.

MISSED APPROACH: Climb to 2600 direct HOWIF and hold.

AWOS-3PT
119.975

KANSAS CITY CENTER
125.55 327.0

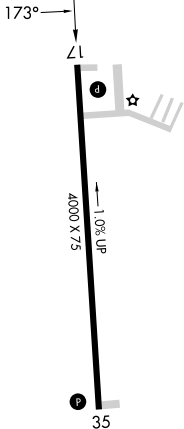
UNICOM
122.9 (CTAF) 0



NC-3, 11 JUN 2026 to 09 JUL 2026

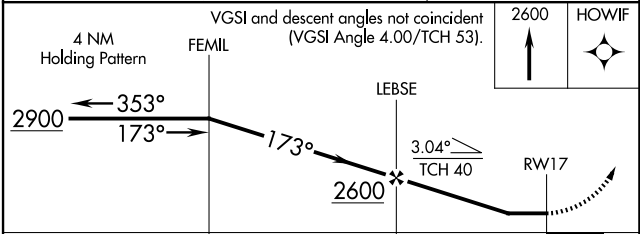
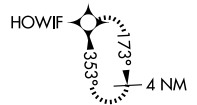
NC-3, 11 JUN 2026 to 09 JUL 2026

ELEV 915 **D** TDZE 915



MIRL Rwy 17-35 **0**
REIL Rws 17 and 35 **0**

MISSED APCH FIX



CATEGORY	A	B	C	D
LNAV MDA	1420-1	505 (600-1)	1420-1½ 505 (600-1½)	NA
CIRCLING	1420-1 505 (600-1)	1460-1 545 (600-1)	1520-1¾ 605 (700-1¾)	NA