

WAAS CH 72946 W05A	APP CRS 050°	Rwy Idg 5000 TDZE 65 Apt Elev 65
--	------------------------	---

RNAV (GPS) RWY 5

MARION COUNTY (X35)

RNP APCH - GPS.

▼ Rwy 5 helicopter visibility reduction below 1 SM NA. Use Ocala altimeter setting; when not received, use Leesburg altimeter setting and increase all MDAs 60 feet and LNAV and LP visibility Cat C/D ¼ SM and Circling visibility Cat D ¼ SM. Straight-in Rwy 5 NA at night, Circling Rwy 5, 10, 28 NA at night.

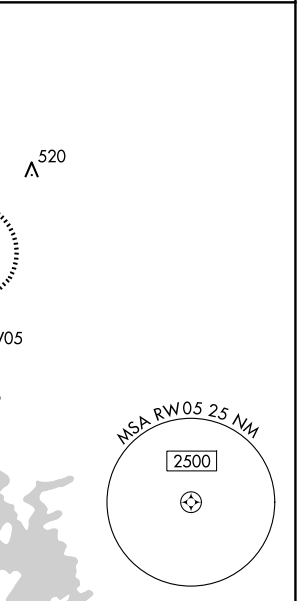
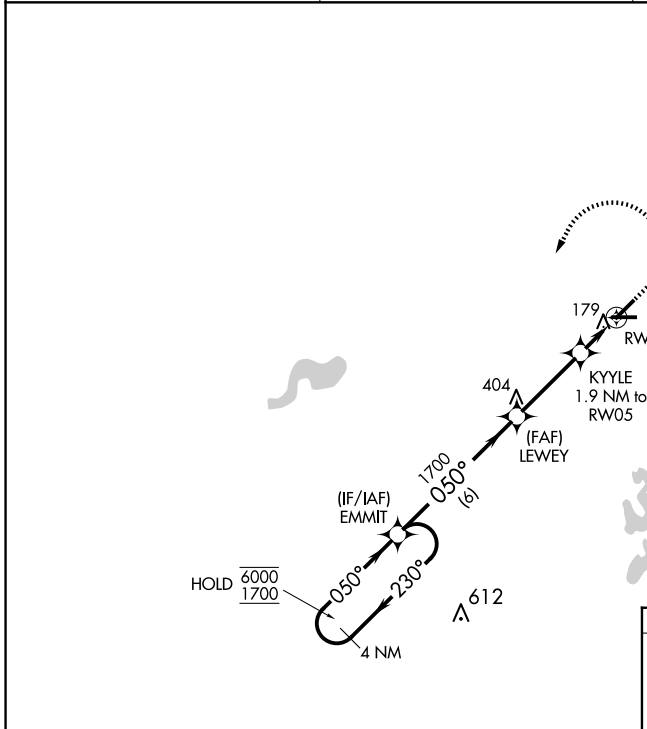
▲ NA

MISSED APPROACH: Climb to 600 then climbing left turn to 1700 direct EMMIT and hold.

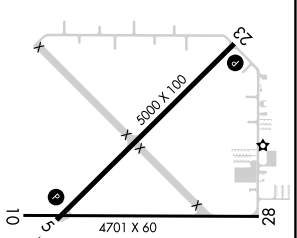
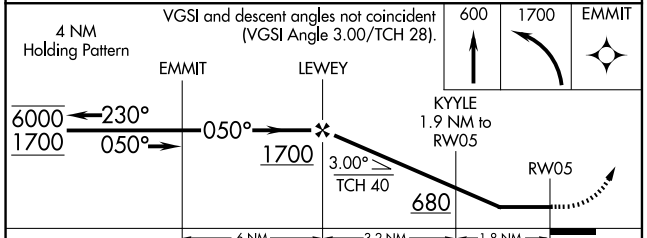
OCF AWOS-3PT
128.125

JACKSONVILLE APP CON
118.6 251.15

UNICOM
122.8 (CTAF) 0



ELEV 65	TDZE 65
---------	---------



CATEGORY	A	B	C	D
LP MDA	500-1	435 (500-1)	500-1¼	435 (500-1¼)
LNAV MDA	540-1	475 (500-1)	540-1⅜	475 (500-1⅜)
CIRCLING	540-1	475 (500-1)	580-1½ 515 (600-1½)	760-2¼ 695 (700-2¼)

MRL Rwy 5-23 and 10-28 0

SE-3, 11 JUN 2026 to 09 JUL 2026

SE-3, 11 JUN 2026 to 09 JUL 2026