

WAAS CH 40136 W15A	APP CRS 182°	Rwy Ldg 2775 TDZE 147 Apt Elev 147
--	------------------------	---

RNAV (GPS) RWY 15

KINGSTON-ULSTER (20N)

RNP APCH - GPS.

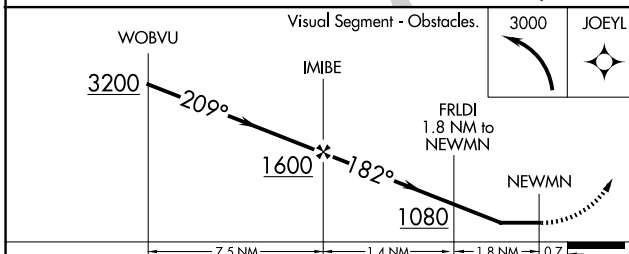
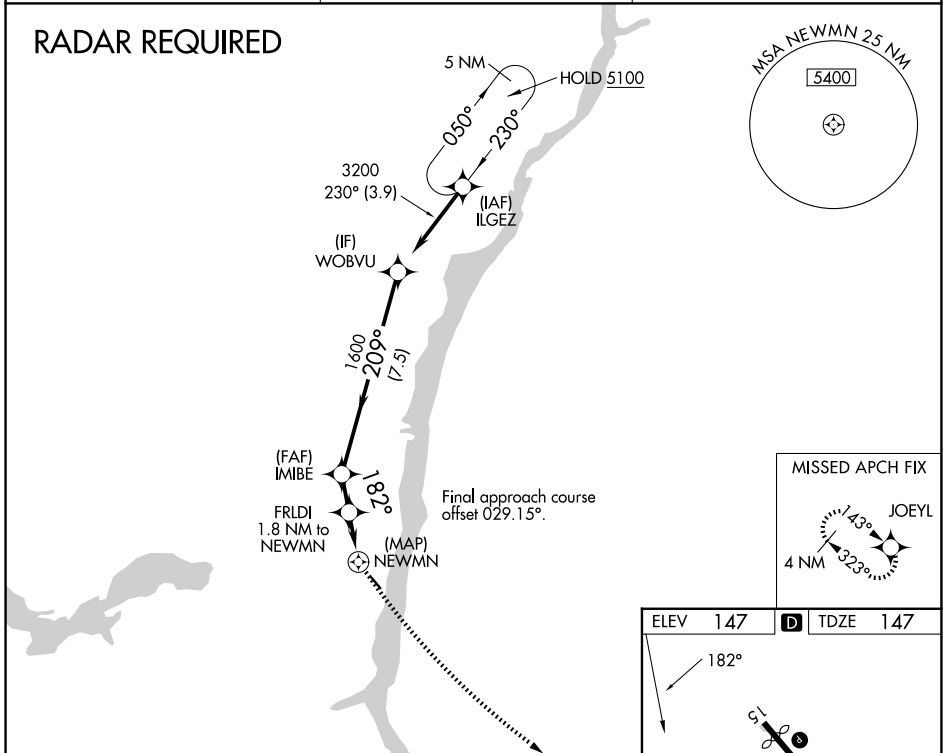
NA Rwy 15 helicopter visibility reduction below 1 SM NA. When Circling to Rwy 33 at night, operational VGSI required, remain on or above VGSI glidepath until threshold. Use Hudson altimeter setting. When not received, use Newburgh altimeter setting and increase all MDA 60 feet. Straight-in Rwy 15 NA at night.

MISSED APPROACH:
Climbing left turn to 3000 direct JOEYL and hold.

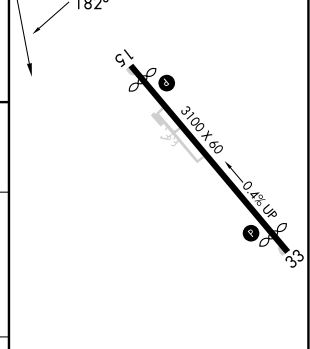
NEW YORK APP CON
132.75 363.1

UNICOM
122.8 (CTAF)

123.3



ELEV 147	D TDZE 147
----------	-------------------



CATEGORY	A	B	C	D
LP MDA	720-1	573 (600-1)		NA
LNAV MDA	800-1	653 (700-1)		NA
CIRCLING	800-1 653 (700-1)	960-1¼ 813 (900-1¼)		NA

REIL Rwy 33 **1**
MIRL Rwy 15-33 **1**

NE-2, 11 JUN 2026 to 09 JUL 2026

NE-2, 11 JUN 2026 to 09 JUL 2026