

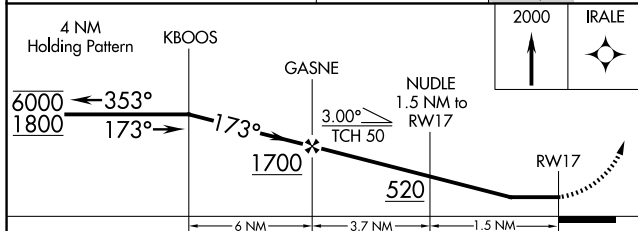
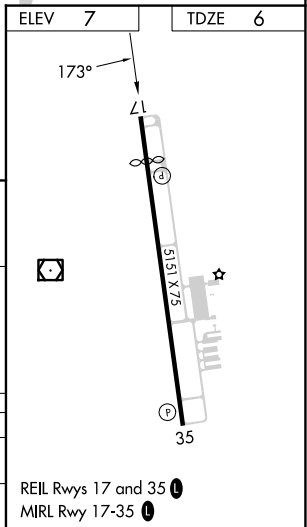
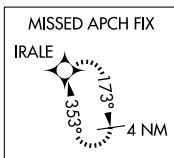
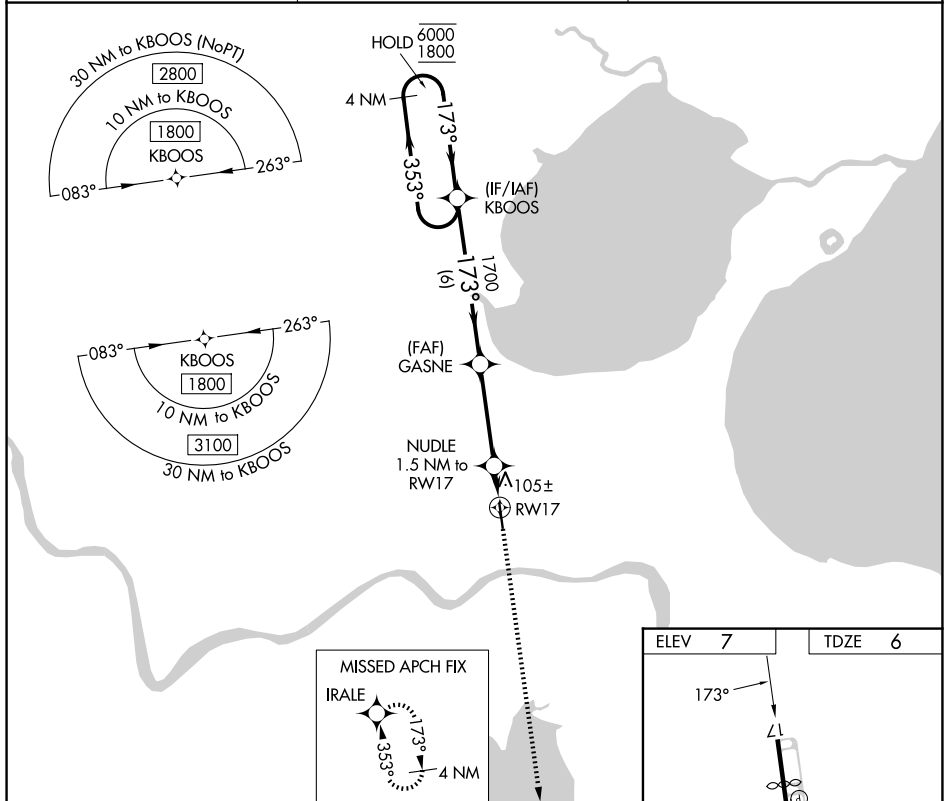
APP CRS	Rwy Ldg	<b>4405</b>
<b>173°</b>	TDZE	<b>6</b>
	Apt Elev	<b>7</b>

# RNAV (GPS) RWY 17

PORT OF SOUTH LOUISIANA EXEC RGNL (APS)

RNP APCH - GPS.	MISSED APPROACH: Climb to 2000 direct IRALE and hold.
Rwy 17 helicopter visibility reduction below 3/4 SM NA.	

AWOS-3PT <b>125.45</b>	NEW ORLEANS APP CON <b>125.5 350.35</b>	UNICOM <b>122.7 (CTAF) 0</b>
---------------------------	--	---------------------------------



CATEGORY	A	B	C	D
LNAV MDA	400-1	394 (400-1)	400-1 1/8 394 (400-1 1/8)	NA
CIRCLING	700-1	693 (700-1)	840-2 1/2 833 (900-2 1/2)	NA

SC-4, 11 JUN 2026 to 09 JUL 2026

SC-4, 11 JUN 2026 to 09 JUL 2026