

APP CRS	Rwy Idg	5000
177°	TDZE	105
	Apt Elev	107

RNAV (GPS) RWY 18

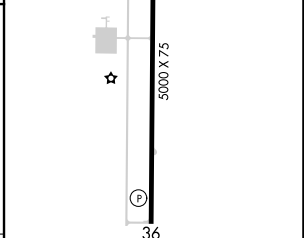
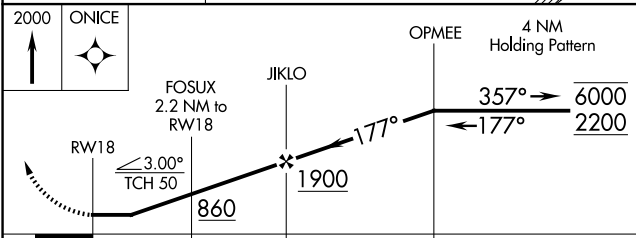
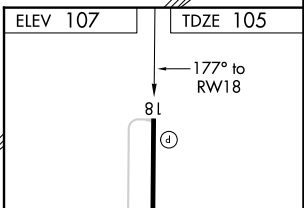
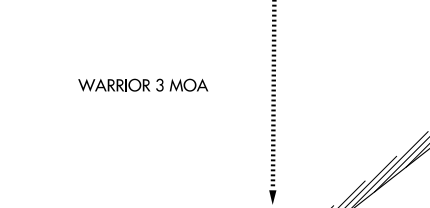
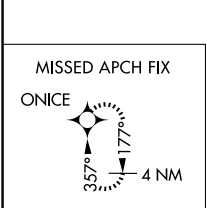
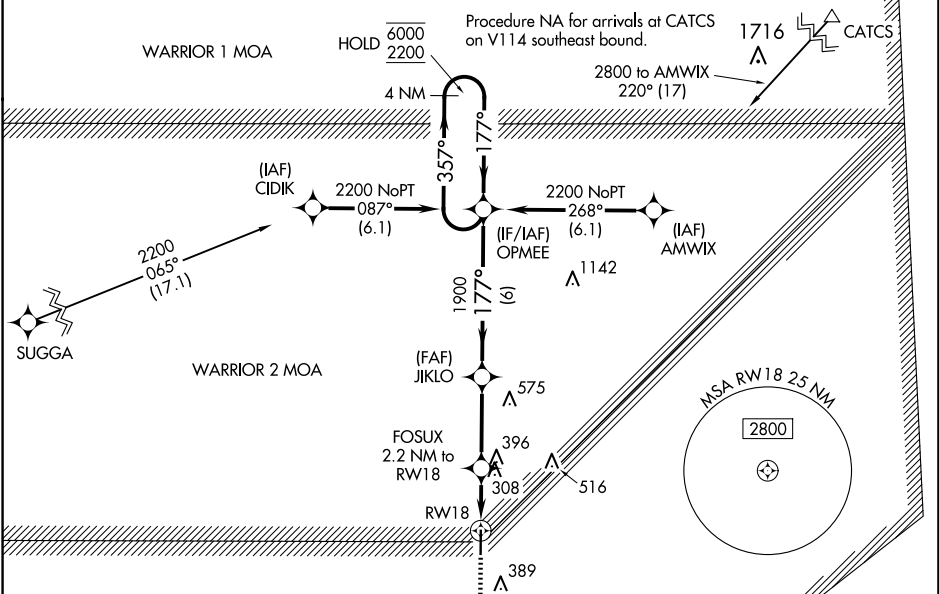
ALLEN PARISH (ACP)

RNP APCH - GPS.

Procedure NA at night. Rwy 18 helicopter visibility reduction below 1 SM NA. When local altimeter setting not received, use Alexandria Intl altimeter setting; increase all MDAs 100 feet and visibility LNAV Cat C ¼ SM.

MISSED APPROACH: Climb to 2000 direct ONICE and hold.

AWOS-3PT 118.275	POLK APP CON 123.7 261.3	GCO 135.075	UNICOM 122.8 (CTAF) 0
----------------------------	------------------------------------	-----------------------	---------------------------------



CATEGORY	A	B	C	D
LNAV MDA	560-1	455 (500-1)	560-1 ³ / ₈ 455 (500-1 ³ / ₈)	NA

MIRL Rwy 18-36 0
REIL Rwy 18 and 36 0

SC-4, 11 JUN 2026 to 09 JUL 2026

SC-4, 11 JUN 2026 to 09 JUL 2026