

LOC/DME I-LHZ 109.35 Chan 30(Y)	APP CRS 046°	Rwy Ldg TDZE Apt Elev	5498 368 368
---	------------------------	-----------------------------	---

ILS or LOC RWY 5

TRIANGLE NORTH EXEC (LHZ)

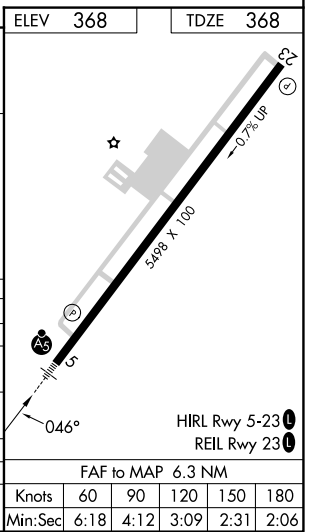
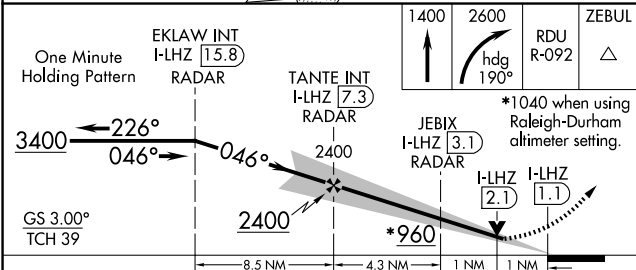
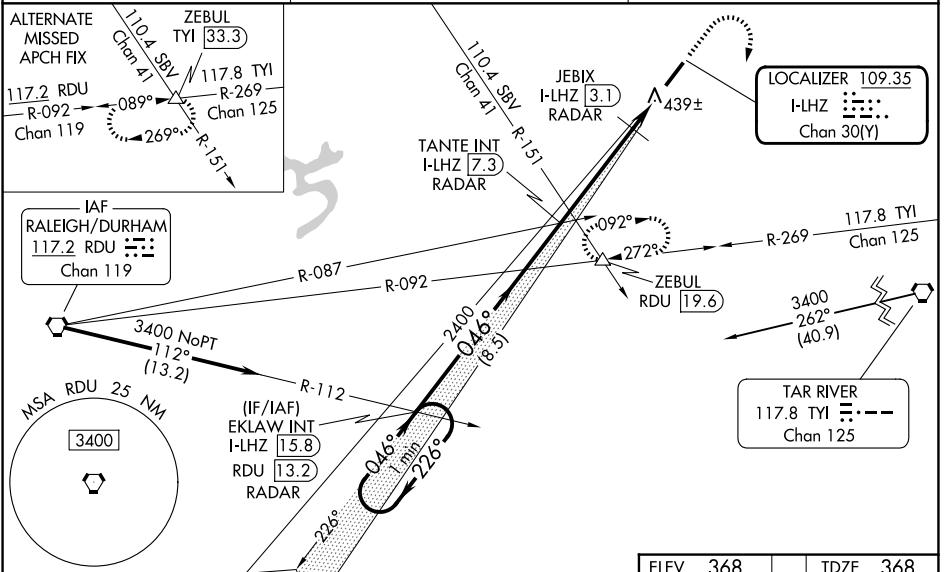
DME or RADAR required.

NA VDP NA when using Raleigh-Durham altimeter setting. When local altimeter setting not received, use Raleigh-Durham altimeter setting and increase ILS DA to 633 feet and all MDAs 80 feet; increase S-LOC and Circling visibility Cats C/D 1/4 SM and JEBIX Fix Minimums: Circling visibility Cat C/D 1/4 SM. Autopilot coupled approach NA below 600 feet MSL.

MALSR

MISSED APPROACH: Climb to 1400 then climbing right turn to 2600 on heading 190° and on RDU VORTAC R-092 to ZEBUL INT/RDU 19.6 DME and hold.

AWOS-3 118.325	RALEIGH APP CON 125.3 353.675	UNICOM 123.0 (CTAF)
--------------------------	---	-------------------------------



CATEGORY	A	B	C	D
S-ILS 5		568-1/2	200 (200-1/2)	
S-LOC 5	960-1/2	592 (600-1/2)	960-1 1/4	592 (600-1 1/4)
CIRCLING	960-1	592 (600-1)	980-1 3/4 612 (700-1 3/4)	1000-2 632 (700-2)
JEBIX FIX MINIMUMS				
S-LOC 5	700-1/2	332 (400-1/2)	700-3/4	332 (400-3/4)
CIRCLING	800-1 432 (500-1)	840-1 472 (500-1)	980-1 3/4 612 (700-1 3/4)	1000-2 632 (700-2)

FAF to MAP 6.3 NM	
Knots	60 90 120 150 180
Min:Sec	6:18 4:12 3:09 2:31 2:06

SE-2, 11 JUN 2026 to 09 JUL 2026

SE-2, 11 JUN 2026 to 09 JUL 2026