

WAAS CH 72940 W14A	APP CRS 142°	Rwy Ldg TDZE Apt Elev	4002 44 45
--	------------------------	-----------------------------	---------------------------------------

RNAV (GPS) RWY 14

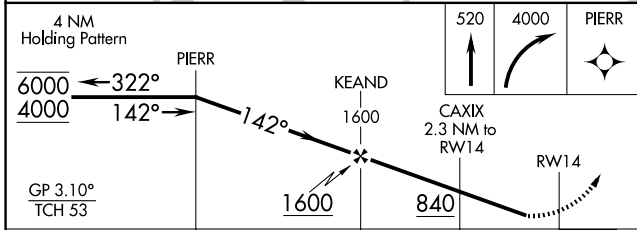
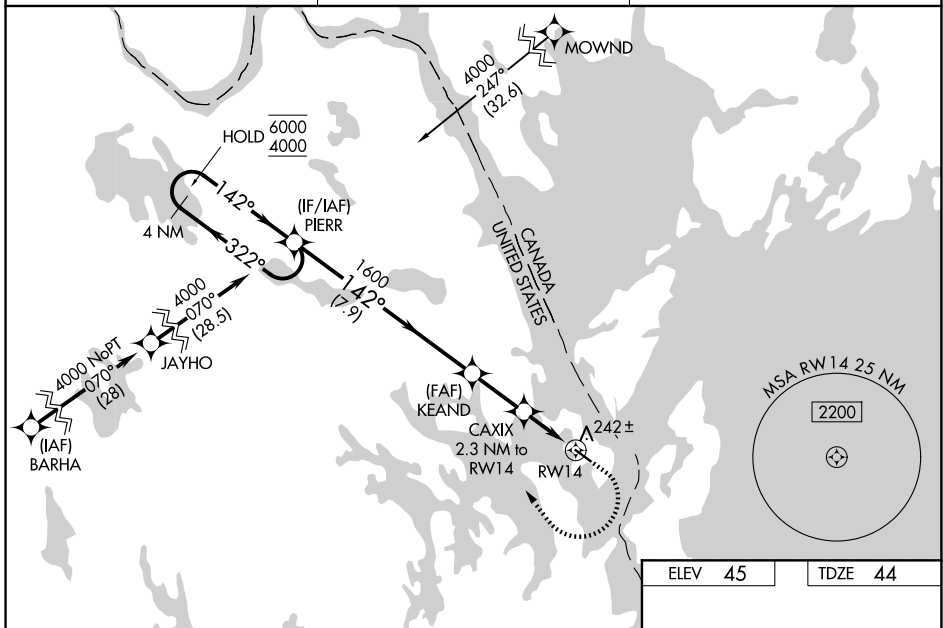
EASTPORT MUNI (EPM)

RNP APCH - GPS.

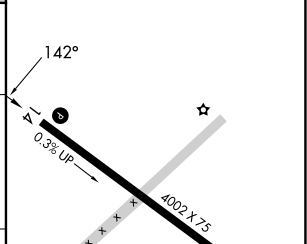
⚠ Rwy 14 helicopter visibility reduction below 1 SM NA. For uncompensated Baro-VNAV systems, LNAV/VNAV NA below -15°C or above 54°C. Baro-VNAV NA when using Hancock County-Bar Harbor altimeter setting. Rwy 14 Straight-in and Circling minimums NA at night. When local altimeter setting not received, use Hancock County/Bar Harbor altimeter setting: increase LPV DA to 462 feet and all visibilities ½ SM; increase LNAV/VNAV DA to 565 feet and all visibilities ½ SM; increase all MDA 160 feet and LNAV visibility Cat C/D ¾ SM and Circling visibility Cat C/D ¾ SM.

MISSED APPROACH: Climb to 520 then climbing right turn to 4000 direct PIERR and hold, continue climb-in-hold to 4000.

AWOS-AV 122.8	BOSTON CENTER 124.25 290.5	UNICOM 122.8 (CTAF) 0
-------------------------	--------------------------------------	---------------------------------



ELEV 45	TDZE 44
---------	---------



CATEGORY	A	B	C	D
LPV DA		309-1	265 (300-1)	
LNAV/VNAV DA		412-1	368 (400-1)	
LNAV MDA	500-1	456 (500-1)	500-1 ¾	456 (500-1 ¾)
CIRCLING	580-1	535 (600-1)	640-1 ½	820-2 ½
			595 (600-1 ½)	775 (800-2 ½)

MIRL Rwy 14-32 0

REIL Rwy 14 and 32 0

NE-1, 11 JUN 2026 to 09 JUL 2026

NE-1, 11 JUN 2026 to 09 JUL 2026