

WAAS CH 63214 W18A	APP CRS 175°	Rwy Ldg 5200 TDZE 718 Apt Elev 733
--	------------------------	---

RNAV (GPS) RWY 18

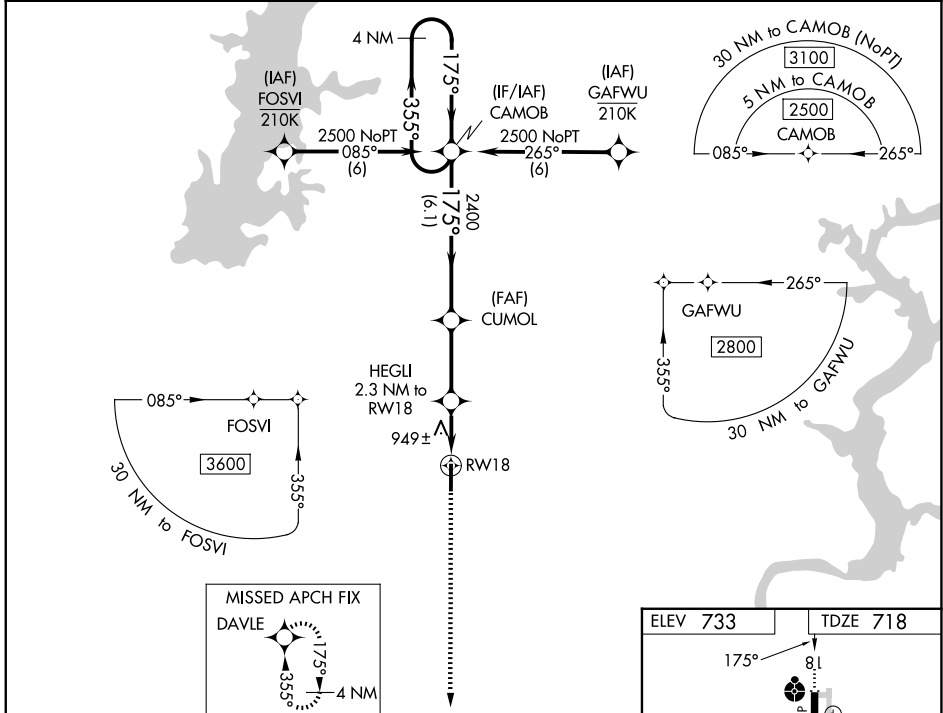
CLAREMORE RGNL (GCM)

For uncompensated Baro-VNAV systems, LNAV/VNAV NA below -16°C (4°F) or above 54°C (130°F). DME/DME RNP-0.3 NA. For inop ALS, increase LNAV/VNAV Cats A/B visibility to 1% SM.

ODALS

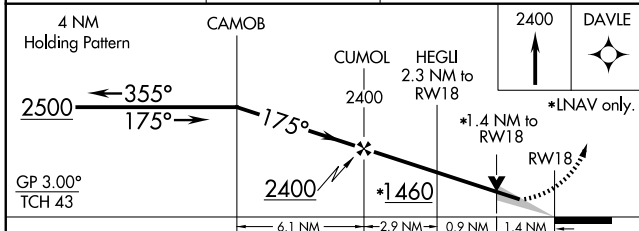
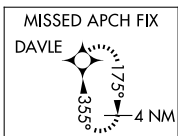
MISSED APPROACH: Climb to 2400 direct DAVLE and hold.

AWOS-3PT 119,925	TULSA APP CON 119.1 360,825	UNICOM 122.7 (CTAF) 0
----------------------------	---------------------------------------	---------------------------------



SC-1, 11 JUN 2026 to 09 JUL 2026

SC-1, 11 JUN 2026 to 09 JUL 2026



ELEV 733	TDZE 718
----------	----------

175°
8.1
0.7% UP
5200x5005
36
MIRL Rwy 18-36
REIL Rwy 36 0

CATEGORY	A	B	C	D
LPV DA	968-3/4	250 (300-3/4)		NA
LNAV/VNAV DA	1281-1 1/2	563 (600-1 1/2)		NA
LNAV MDA	1200-3/4	482 (500-3/4)	1200-1 1/4 482 (500-1 1/4)	NA
CIRCLING	1260-1	527 (600-1)	1380-1 3/4 647 (700-1 3/4)	NA