

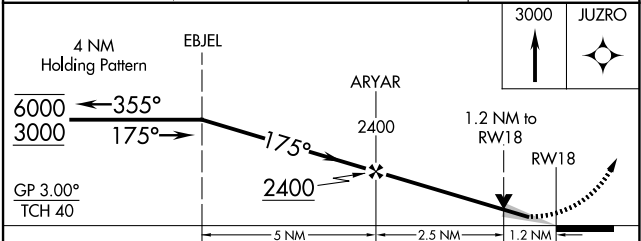
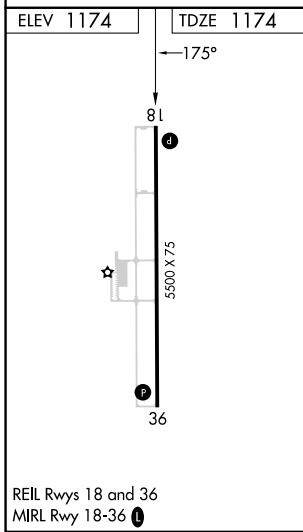
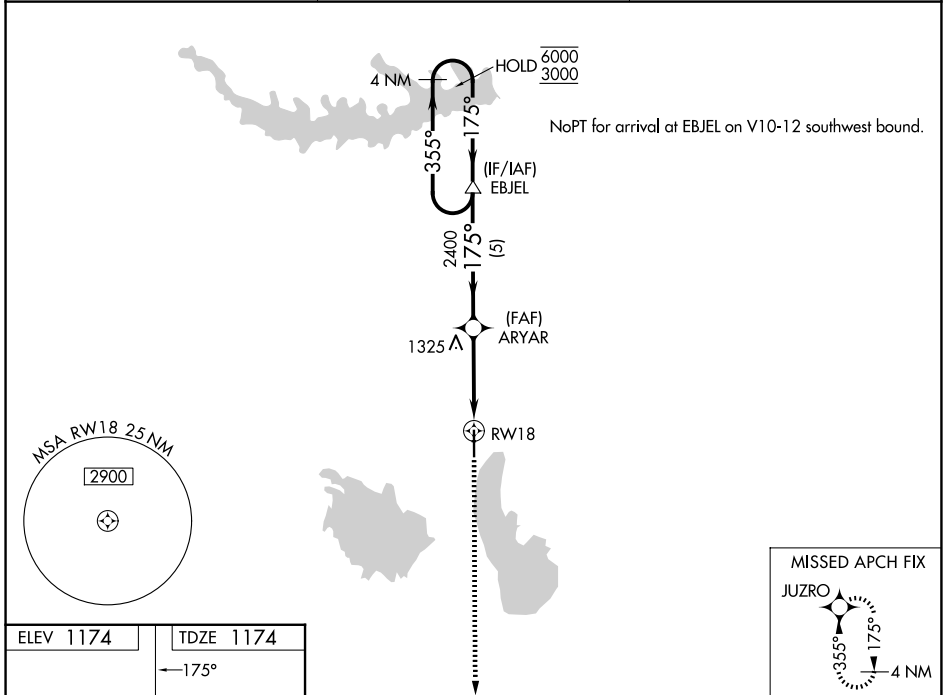
WAAS CH 66021 W18A	APP CRS 175°	Rwy Ldg TDZE Apt Elev	5500 1174 1174
--	------------------------	-----------------------------	---

RNAV (GPS) RWY 18

COFFEY COUNTY (UKL)

RNP APCH-GPS.	MISSED APPROACH: Climb to 3000 direct JUZRO and hold.
<p>For uncompensated Baro-VNAV systems, LNAV/VNAV NA below -17°C or above 54°C.</p>	

AWOS-3PT 121.125	KANSAS CITY CENTER 127.725 270.25	UNICOM 123.0 (CTAF) 0
----------------------------	---	---------------------------------



CATEGORY	A	B	C	D
LPV DA	1424-1 250 (300-1)			NA
LNAV/VNAV DA	1424-1 250 (300-1)			NA
LNAV MDA	1580-1	406 (500-1)	1580-1 1/8 406 (500-1 1/8)	NA
CIRCLING	1580-1 406 (500-1)	1640-1 466 (500-1)	1920-2 1/4 746 (800-2 1/4)	NA

NC-2, 11 JUN 2026 to 09 JUL 2026

NC-2, 11 JUN 2026 to 09 JUL 2026