

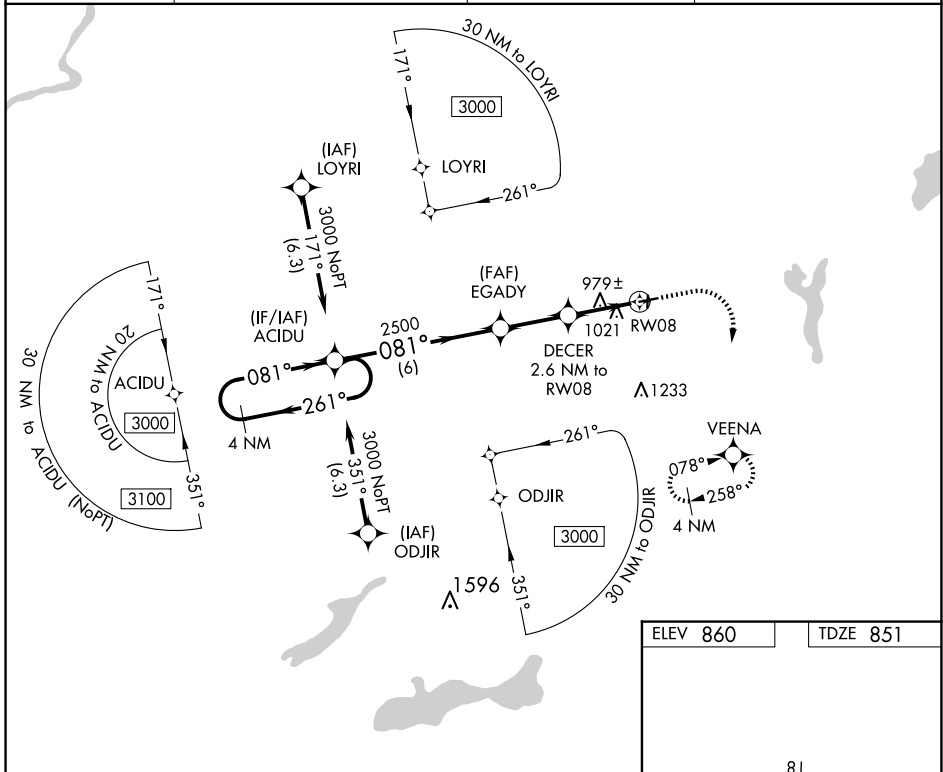
| | | | |
|--|------------------------|-----------------------------|---|
| WAAS CH 78423 W08A | APP CRS 081° | Rwy Idg TDZE Apt Elev | 3900 851 860 |
|--|------------------------|-----------------------------|---|

RNAV (GPS) RWY 8

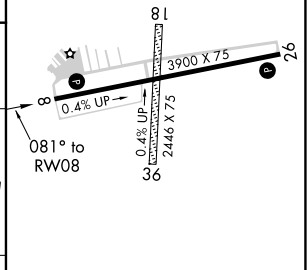
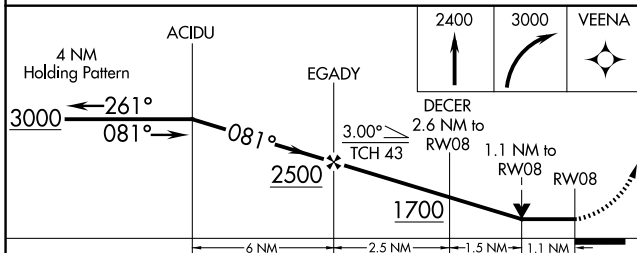
EAST TROY MUNI (57C)

| | |
|--|--|
| RNP APCH. ▼ Obtain local altimeter setting on CTAF; when not received use General Mitchell Intl altimeter setting and increase all MDA 80 feet. Rwy 8 helicopter visibility reduction below 3/4 SM NA. VDP NA when using General Mitchell Intl altimeter setting. | MISSED APPROACH: Climb to 2400 then climbing right turn to 3000 direct VEENA and hold. |
|--|--|

| | | | |
|----------------------------|--|-----------------------|--|
| AWOS-3PT 118.125 | MILWAUKEE APP CON 125.35 307.0 | GCO 121.725 | UNICOM 123.0 (CTAF) ① |
|----------------------------|--|-----------------------|--|



| | |
|----------|----------|
| ELEV 860 | TDZE 851 |
|----------|----------|



| CATEGORY | A | B | C | D |
|----------|--------|-------------|---|----|
| LP MDA | 1240-1 | 389 (400-1) | | NA |
| LNAV MDA | 1280-1 | 429 (500-1) | | NA |

MIRL Rwy 8-26 **①**
REIL Rws 8 and 26 **①**

EC-3, 11 JUN 2026 to 09 JUL 2026

EC-3, 11 JUN 2026 to 09 JUL 2026