

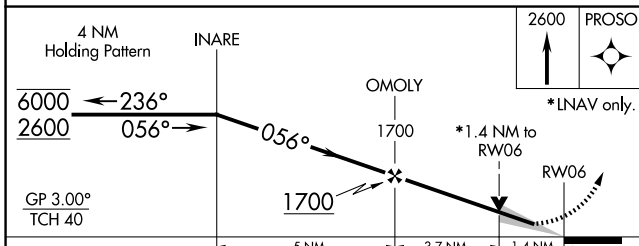
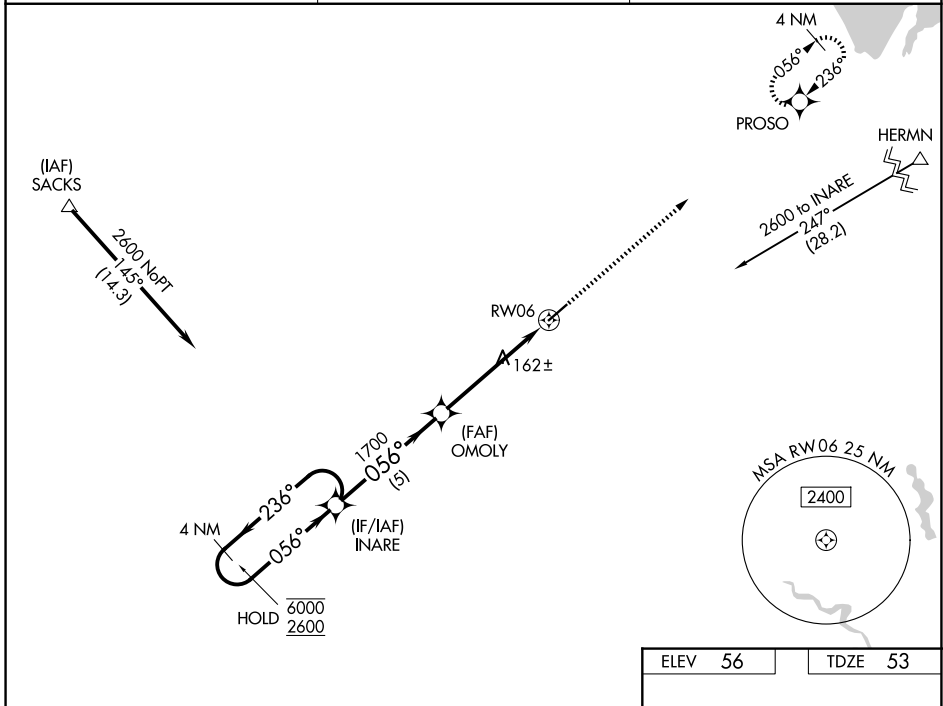
WAAS CH <b>49018</b> <b>W06A</b>	APP CRS <b>056°</b>	Rwy Ldg TDZE Apt Elev	<b>5000</b> <b>53</b> <b>56</b>
--	------------------------	-----------------------------	---------------------------------------

# RNAV (GPS) RWY 6

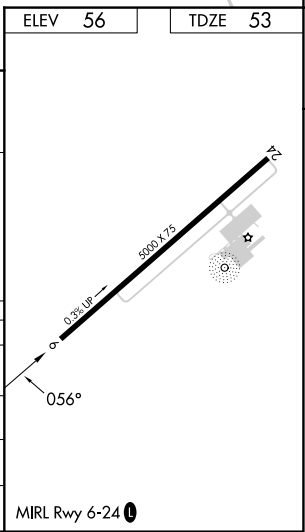
SUMMERVILLE (DYB)

RNP APCH.	MISSED APPROACH: Climb to 2600 direct PROSO and hold.
<p>⚠ Cirdling Rwy 24 NA at night. For uncompensated Baro-VNAV systems, LNAV/VNAV NA below -1.5°C or above 54°C.</p>	

AWOS-3 <b>119.575</b>	CHARLESTON APP CON <b>120.7 306.925</b>	UNICOM <b>123.0 (CTAF)</b>
--------------------------	--	-------------------------------



CATEGORY	A	B	C	D
LPV DA	253-¾	200 (200-¾)		NA
LNAV/VNAV DA	477-1¼	424 (500-1¼)		NA
LNAV MDA	540-1	487 (500-1)	540-1¾ 487 (500-1¾)	NA
CIRCLING	860-1	804 (900-1)	860-2¼ 804 (900-2¼)	NA



SE-2, 11 JUN 2026 to 09 JUL 2026

SE-2, 11 JUN 2026 to 09 JUL 2026