

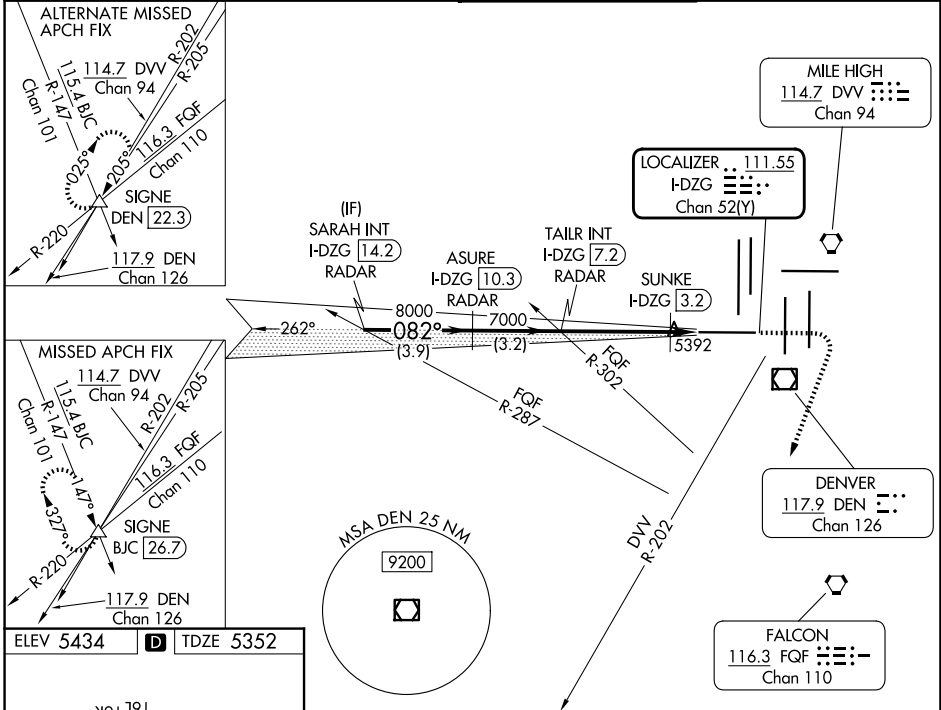
LOC/DME I-DZG 111.55 Chan 52(Y)	APP CRS 082°	Rwy Ldg TDZE Apt Elev 12000 5352 5434
--	------------------------	---

ILS or LOC RWY 7

DENVER INTL (DEN)

RADAR required for procedure entry.		MALS/R 	MISSED APPROACH: Climb to 5900 then climbing right turn to 11000 on heading 193° and on DVV VORTAC R-202 to SIGNE INT/BJC 26.7 DME and hold. Continue climb-in-hold to 11000.
▼ For inop ALS, increase SUNKE fix Cat C/D visibility to RVR 4500. Simultaneous approach authorized.			

D-ATIS 125.6 379.9	DENVER APP CON 119.3 307.3 (N) 120.35 379.3 (S)	DENVER TOWER 128.75 273.55	GND CON 121.35 379.175 (W) 121.85 377.1 (E)
------------------------------	---	--------------------------------------	---



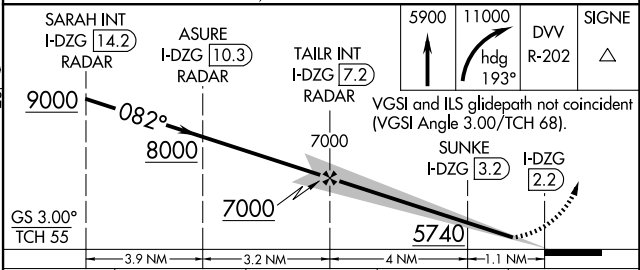
ELEV 5434 **D** TDZE 5352

Diagram showing HIRL (High Intensity Runway Lights) and TDZL/RCLS (Touchdown and Runway Center Line) lights. Altitudes range from 35L to 19L. Includes a table for FAF to MAP 5 NM.

Knots	60	90	120	150	180
Min:Sec	5:00	3:20	2:30	2:00	1:40

HIRL all Rwys
TDZL/RCLS Rwys 7, 16L, 16R, 17R, 26, 34L, 34R, 35L, 35R

FAF to MAP 5 NM



CATEGORY	A	B	C	D
S-ILS 7		5552/18	200 (200-½)	
S-LOC 7	5740/24	388 (400-½)	5740/35	388 (400-⅝)
SUNKE FIX MINIMUMS				
S-LOC 7		5660/24	308 (300-½)	

SW-1, 11 JUN 2026 to 09 JUL 2026

SW-1, 11 JUN 2026 to 09 JUL 2026