

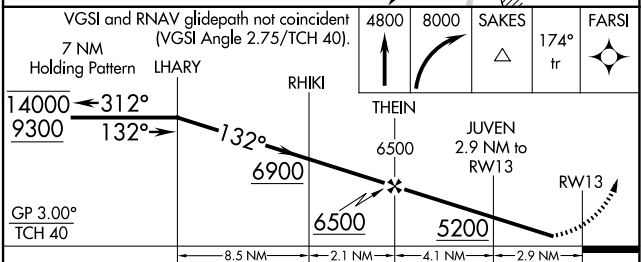
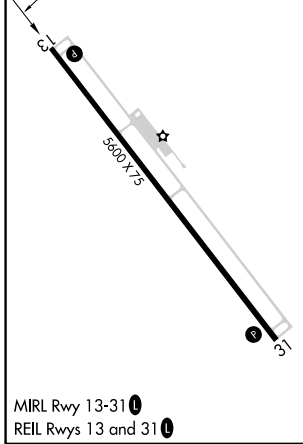
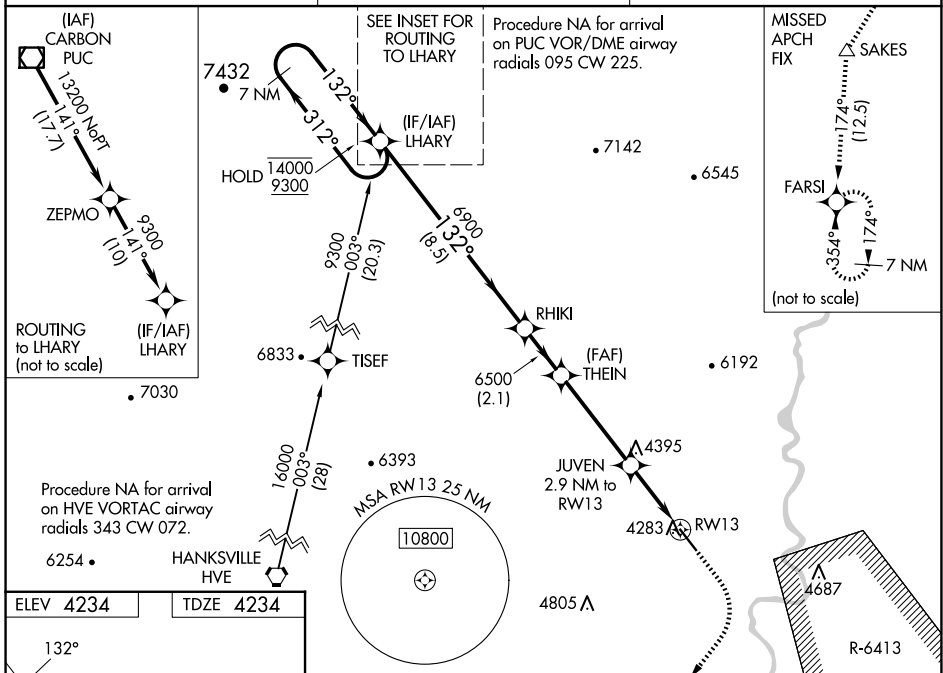
WAAS CH 53746 W13A	APP CRS 132°	Rwy Idg TDZE Apt Elev	5600 4234 4234
--	------------------------	-----------------------------	---

RNAV (GPS) RWY 13

GREEN RIVER MUNI (U34)

RNP APCH - GPS.		MISSED APPROACH: Climb to 4800, then climbing right turn to 8000 direct SAKES and on 174° track to FARSI and hold.
<p>▼ Rwy 13 helicopter visibility reduction below 3/4 SM NA. Use Moab altimeter setting; when not received, use Hanksville altimeter setting and increase LPV DA to 4603 feet; increase LNAV/VNAV DA to 4603 feet; increase all MDAs 20 feet and LNAV visibility Cat C/D 1/8 SM, and Circling visibility Cat D 1/4 SM. Baro-VNAV NA. Circling NA for Cats C and D northeast of Rwy 13-31.</p> <p>▲ NA</p>		

CNY ASOS 118.525	SALT LAKE CENTER 133.6 269.25	UNICOM 122.8 (CTAF) 0
----------------------------	---	---------------------------------



CATEGORY	A	B	C	D
LPV DA		4588-1	354 (400-1)	
LNAV/VNAV DA		4588-1	354 (400-1)	
LNAV MDA	4640-1	406 (500-1)	4640-1 1/8	406 (500-1 1/8)
CIRCLING	4800-1 566 (600-1)	4840-1 606 (700-1)	4840-1 3/4 606 (700-1 3/4)	5100-2 3/4 866 (900-2 3/4)

SW-4, 11 JUN 2026 to 09 JUL 2026

SW-4, 11 JUN 2026 to 09 JUL 2026