

APP CRS **076°**  
 Rwy Ldg **5101**  
 TDZE **3305**  
 Apt Elev **3313**

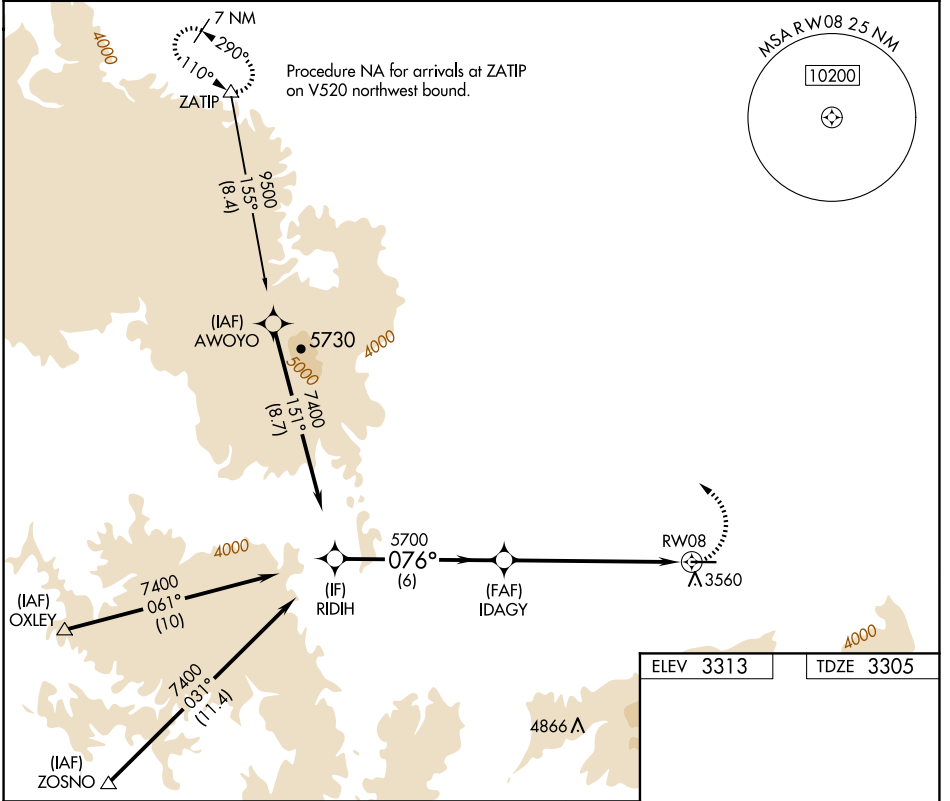
# RNAV (GPS) RWY 8

IDAHO COUNTY (GIC)

RNP APCH - GPS.  
 ▼ Rwy 8 helicopter visibility reduction below ¼ SM NA.  
 ▲ Circling NA south of Rwy 8-26.

MISSED APPROACH: Climbing left turn to 7300 direct ZATIP and hold.

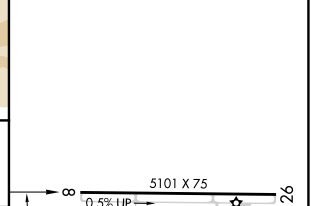
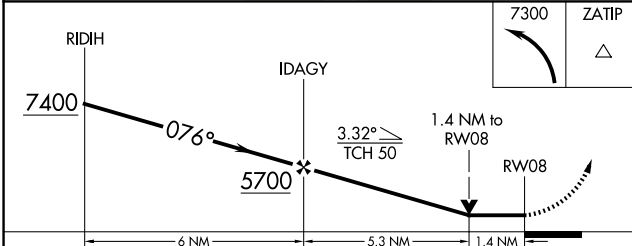
AWOS-3 <b>118.175</b>	SEATTLE CENTER <b>123.95 290.55</b>	CTAF <b>122.8</b>
--------------------------	--	----------------------



NW-1, 11 JUN 2026 to 09 JUL 2026

NW-1, 11 JUN 2026 to 09 JUL 2026

ELEV 3313	TDZE 3305
-----------	-----------



CATEGORY	A	B	C	D
LNVA MDA	3820-1	515 (600-1)	3820-1 3/8	515 (600-1 3/8)
CIRCLING	3820-1	507 (600-1)	3820-1 1/2	3880-2
			507 (600-1 1/2)	567 (600-2)

REIL Rwy 8  
 MIRL Rwy 8-26