

WAAS CH 86733 W18A	APP CRS 176°	Rwy Idg TDZE Apt Elev	5001 2238 2238
--	------------------------	-----------------------------	---

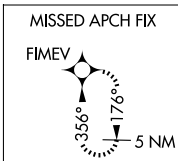
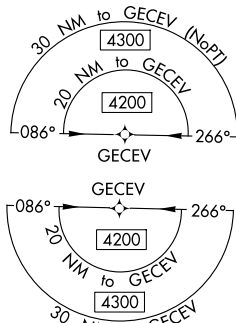
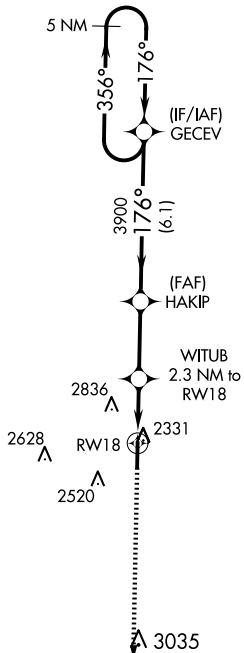
RNAV (GPS) RWY 18

HILL CITY MUNI (HLC)

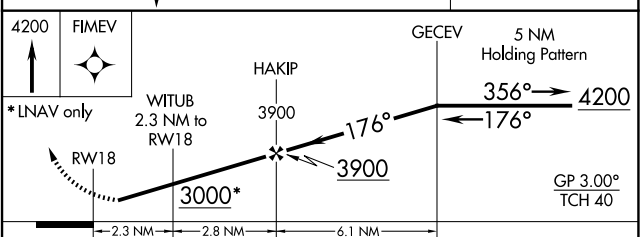
⚠ For uncompensated Baro-VNAV systems, LNAV/VNAV NA below -24°C (-11°F) or above 54°C (130°F). Circling NA west of Rwy 18-36. DME/DME RNP-0.3 NA. When local altimeter setting not received, use Hays altimeter setting: Increase LPV DA to 2617 feet, LNAV/VNAV DA to 2630 feet, and visibility LPV all Cats ¼ mile, LNAV/VNAV all Cats ⅓ mile; Increase all MDA 140 feet and visibility LNAV Cat C ⅓ mile and Circling Cat C ¼ mile. Night landing: Rwy 18 NA. Helicopter visibility reduction below 1 SM NA. Baro-VNAV NA when using Hays altimeter setting.

MISSED APPROACH:
Climb to 4200 direct
FIMEV and hold.

ASOS 118.425	DENVER CENTER 132.7 226.675	CTAF 122.9
------------------------	---------------------------------------	----------------------



ELEV 2238	TDZE 2238
-----------	-----------



CATEGORY	A	B	C	D
LPV DA	2488-1	250 (300-1)		NA
LNAV/VNAV DA	2501-1	263 (300-1)		NA
LNAV MDA	2600-1	362 (400-1)		NA
C CIRCLING	2640-1 402 (500-1)	2700-1 462 (500-1)	2700-1½ 462 (500-1½)	NA

HILL CITY, KANSAS
Amdt 1B 12NOV15

39°23'N-99°50'W

HILL CITY MUNI (HLC)

RNAV (GPS) RWY 18

NC-2, 11 JUN 2026 to 09 JUL 2026

NC-2, 11 JUN 2026 to 09 JUL 2026