

LOC/DME I-GAO 109.1 Chan 28	APP CRS 359°	Rwy Ldg 6500 TDZE -2 Apt Elev 0
--	------------------------	--

ILS or LOC RWY 36

SOUTH LAFOURCHE LEONARD MILLER JR (GAO)

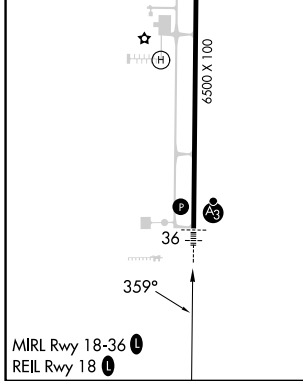
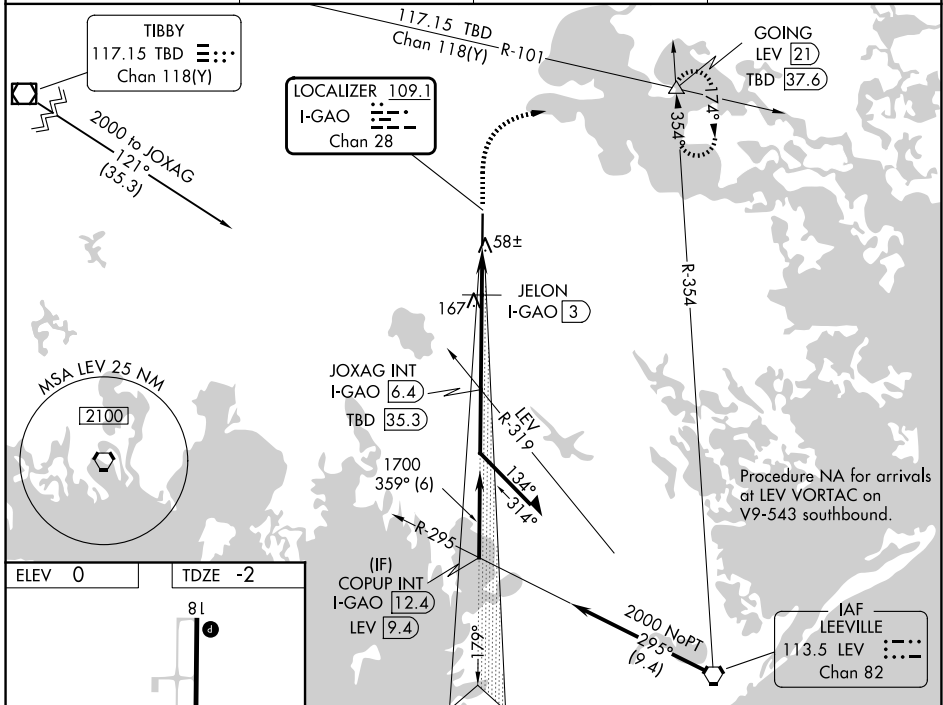
DME required.

Autopilot coupled approach NA below 210 feet.

SSALR

MISSED APPROACH: Climb to 1200 then climbing right turn to 2000 on heading 050° and TBD VOR/DME R-101 to GOING INT/LEV 21 DME and hold.

AWOS-3PT 118.175	NEW ORLEANS APP CON 120.85 256.9	CLNC DEL 120.85	UNICOM 123.0 (CTAF)
----------------------------	--	---------------------------	-------------------------------



1200	2000	TBD R-101	GOING	JOXAG INT I-GAO 6.4	Remain within 10 NM
↑	hdg 050°		△		
I-GAO 1.2	I-GAO 2.1	JELON I-GAO 3	1700	179°	2000
			620	359°	1700
0.9 NM		1 NM		3.4 NM	
CATEGORY	A	B	C	D	
S-ILS 36	198-½ 200 (200-½)				
S-LOC 36	320-½ 322 (400-½)				
CIRCLING	440-1 440 (500-1)	560-1 560 (600-1)	640-1¾ 640 (700-1¾)	640-2 640 (700-2)	