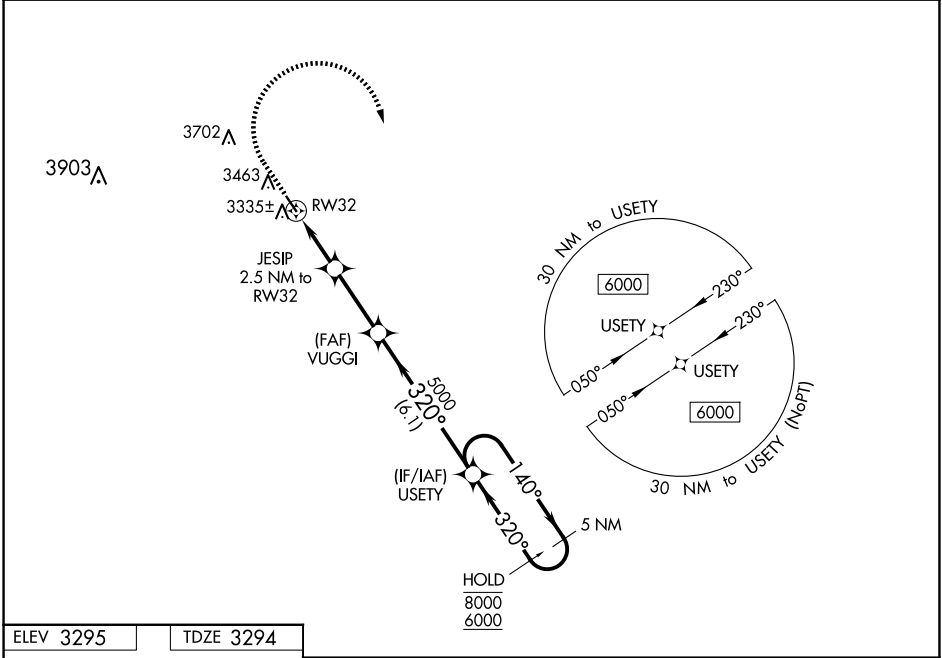


WAAS CH <b>77540</b> <b>W32A</b>	APP CRS <b>320°</b>	Rwy Idg <b>3699</b> TDZE <b>3294</b> Apt Elev <b>3295</b>
--	------------------------	---

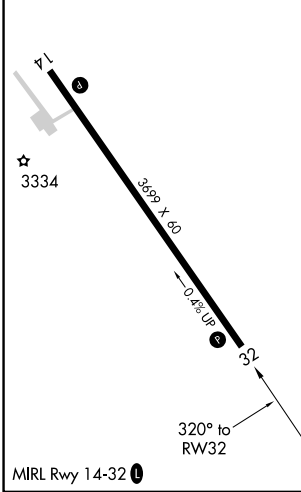
# RNAV (GPS) RWY 32

MARTIN MUNI (9V6)

RNP APCH.		MISSED APPROACH: Climb to 3800 then climbing right turn to 6000 direct USETY and hold.
AWOS-2 <b>123.0</b>	DENVER CENTER <b>127.95 338.2</b>	CTAF <b>122.9</b>



ELEV <b>3295</b>	TDZE <b>3294</b>
------------------	------------------



3800	6000	USETY	VGSI and RNAV glidepath not coincident (VGSI Angle 3.00/TCH 28).	
*LNAV only		JESIP 2.5 NM to RWY 32	VUGGI 5000	USETY 5 NM Holding Pattern
* 0.9 NM to RWY 32		4100*	5000	8000 / 6000
0.9 1.6 NM		2.8 NM	6.1 NM	GP 3.00° TCH 40
CATEGORY	A	B	C	D
LPV DA	3544-1 250 (300-1)			NA
LNAV/VNAV DA	3544-1 250 (300-1)			NA
LNAV MDA	3600-1 306 (400-1)			NA
CIRCLING	3780-1 485 (500-1)	3820-1 525 (600-1)	4060-2½ 765 (800-2½)	NA

NC-1, 11 JUN 2026 to 09 JUL 2026

NC-1, 11 JUN 2026 to 09 JUL 2026