

|             |          |             |
|-------------|----------|-------------|
| APP CRS     | Rwy Idg  | <b>2289</b> |
| <b>059°</b> | TDZE     | <b>118</b>  |
|             | Apt Elev | <b>118</b>  |

# RNAV (GPS) RWY 6

POTOMAC AIRFIELD (VKK)

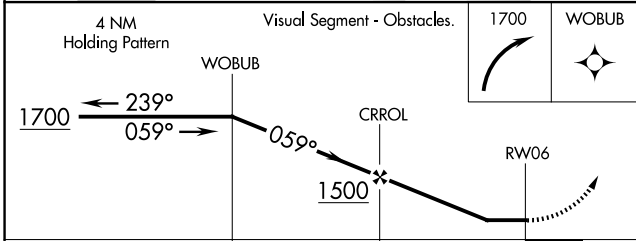
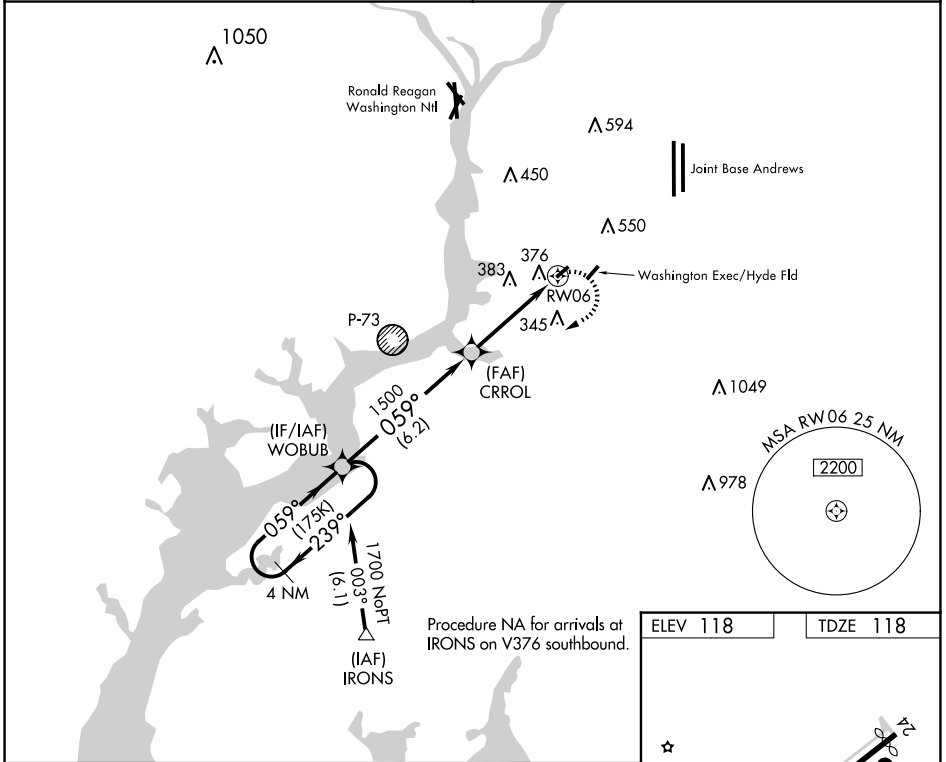
RNP APCH - GPS.

**▽** Circling NA SE of Rwy 6-24. Circling Rwy 24 NA at night. If local altimeter setting not received, use Joint Base Andrews altimeter setting and increase all MDAs 40 feet. Rwy 6 helicopter visibility reduction below 1 SM NA.

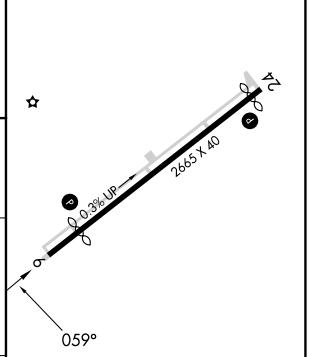
**△** NA

MISSED APPROACH: Climbing right turn to 1700 direct WOBUB and hold.

|                                       |                                 |
|---------------------------------------|---------------------------------|
| POTOMAC APP CON<br><b>124.7 338.2</b> | UNICOM<br><b>122.8 (CTAF) 0</b> |
|---------------------------------------|---------------------------------|



|          |          |
|----------|----------|
| ELEV 118 | TDZE 118 |
|----------|----------|



| CATEGORY | A                    | B | C  | D |
|----------|----------------------|---|----|---|
| RNAV MDA | 680-1<br>562 (600-1) |   | NA |   |
| CIRCLING | 740-1<br>622 (700-1) |   | NA |   |

MIRL Rwy 6-24 0

REIL Rwys 6 and 24

NE-3, 11 JUN 2026 to 09 JUL 2026

NE-3, 11 JUN 2026 to 09 JUL 2026