

WAAS CH <b>53518</b> W17A	APP CRS <b>174°</b>	Rwy Idg TDZE Apt Elev	<b>3898</b> <b>822</b> <b>825</b>
---------------------------------	------------------------	-----------------------------	---

# RNAV (GPS) RWY 17

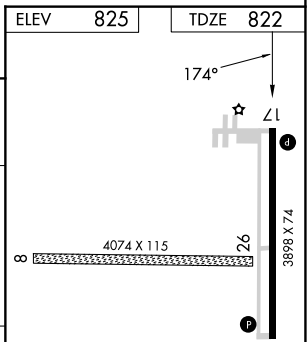
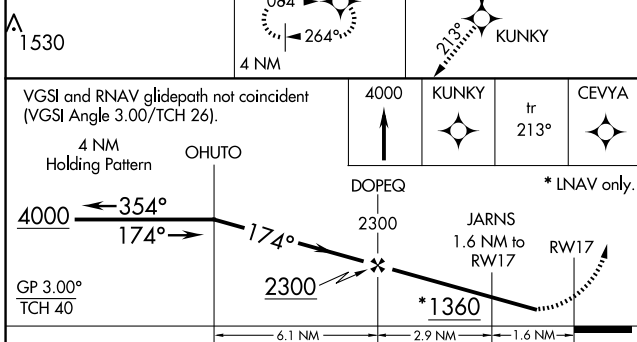
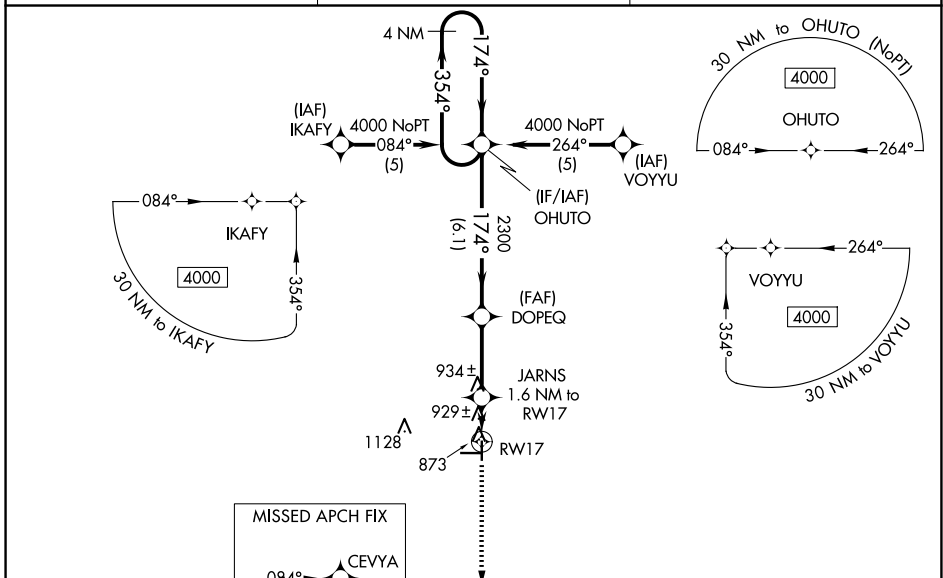
HUTSON FLD (GAF)

RNP APCH - GPS.

**NA** For uncompensated Baro-VNAV systems, LNAV/VNAV NA below -1.6°C or above 54°C. Rwy 17 helicopter visibility reduction below 3/4 SM NA. When local altimeter setting not received, use Grand Forks Intl altimeter setting: increase LPV DA to 1141 feet and all visibilities 1/4 SM; increase LNAV/VNAV DA to 1297 feet and all visibilities 1/4 SM; increase all MDA's 80 feet and visibility LNAV and circling Cat C 1/4 SM. Baro-VNAV NA when using Grand Forks Intl altimeter setting. Circling NA to Rwy's 8 and 26.

**MISSED APPROACH:** Climb to 4000 direct KUNKY and on track 213° to CEVYA and hold, continue climb-in-hold to 4000.

AWOS-3 <b>118.625</b>	GRAND FORKS APP CON * <b>118.1 318.1</b>	UNICOM <b>122.8</b> (CTAF) <b>0</b>
--------------------------	---	--



CATEGORY	A	B	C	D
LPV DA	1072-1	250 (300-1)		NA
LNAV/VNAV DA	1228-1 1/2	406 (500-1 1/2)		NA
LNAV MDA	1200-1	378 (400-1)		NA
CIRCLING	1340-1	515 (600-1)	1440-1 3/4 615 (700-1 3/4)	NA

MIRL Rwy 17-35 **0**

NC-1, 11 JUN 2026 to 09 JUL 2026

NC-1, 11 JUN 2026 to 09 JUL 2026