

RNAV (GPS) RWY 13

COOPERSTOWN MUNI (S32)

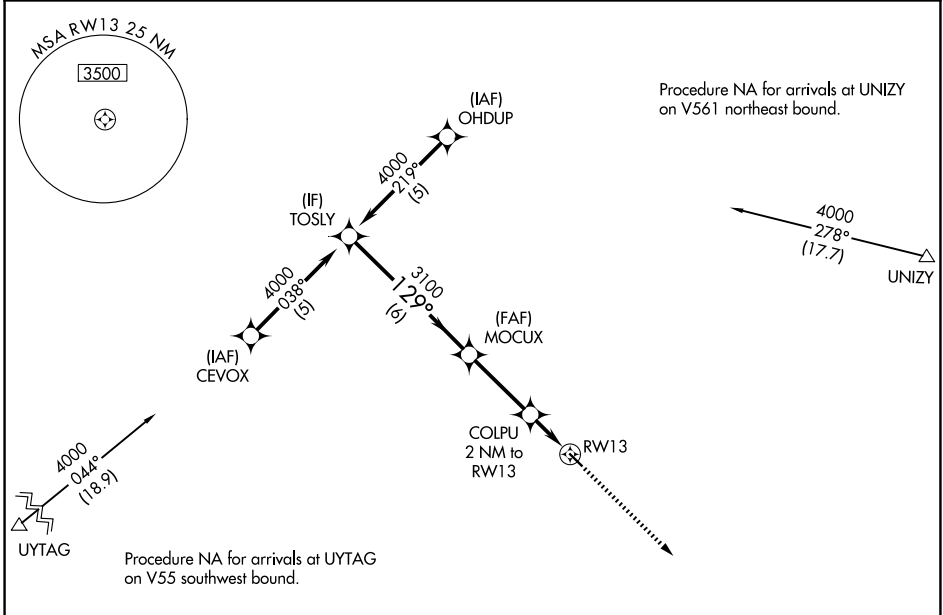
APP CRS 129°	Rwy Ldg TDZE Apt Elev	3500 1424 1424
------------------------	-----------------------------	---

RNP APCH - GPS.

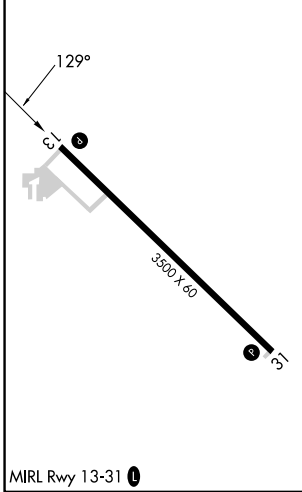
▼ Rwy 13 helicopter visibility reduction below 1 SM NA. Procedure NA at night.
▲ NA When local altimeter setting not received, use MSL altimeter setting and increase all MDAs 100 feet and LNAV visibility Cat C ¼ SM, and Circling visibility Cat C ¼ SM.

MISSED APPROACH: Climb to 3100 direct RAKGU and hold.

AWOS-3 118.75	MINNEAPOLIS CENTER 132.15 269.6	CTAF 122.9 0
-------------------------	---	------------------------



ELEV 1424	TDZE 1424
-----------	-----------



VGSI and descent angles not coincident (VGSI Angle 3.00/TCH 25).			
TOSLY	MOCUX	COLPU 2 NM to RWY 13	RAKGU
4000	3100	2100	3100
129° / 3.04° TCH 40			
6 NM / 3.1 NM / 2 NM			
CATEGORY	A	B	C
LNAV MDA	1860-1	436 (500-1)	1860-1¼ 436 (500-1¼)
CIRCLING	1880-1 456 (500-1)	1900-1 476 (500-1)	1940-1½ 516 (600-1½)
			NA

MIRL Rwy 13-31 0
 COOPERSTOWN, NORTH DAKOTA
 Orig-A 14MAY26

COOPERSTOWN MUNI (S32)
 47°25'N-98°06'W
RNAV (GPS) RWY 13

NC-1, 11 JUN 2026 to 09 JUL 2026

NC-1, 11 JUN 2026 to 09 JUL 2026