

WAAS CH 72722 W17A	APP CRS 167°	Rwy Ldg 3799 TDZE 225 Apt Elev 225
--	------------------------	---

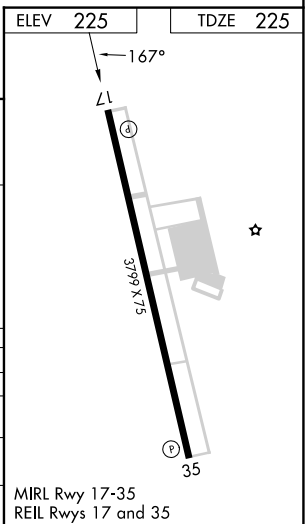
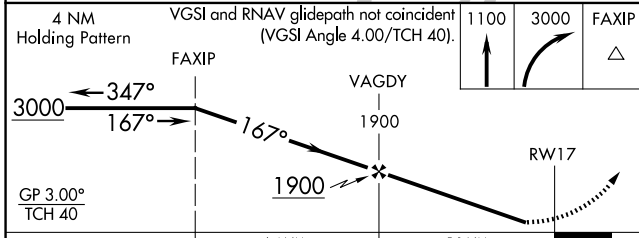
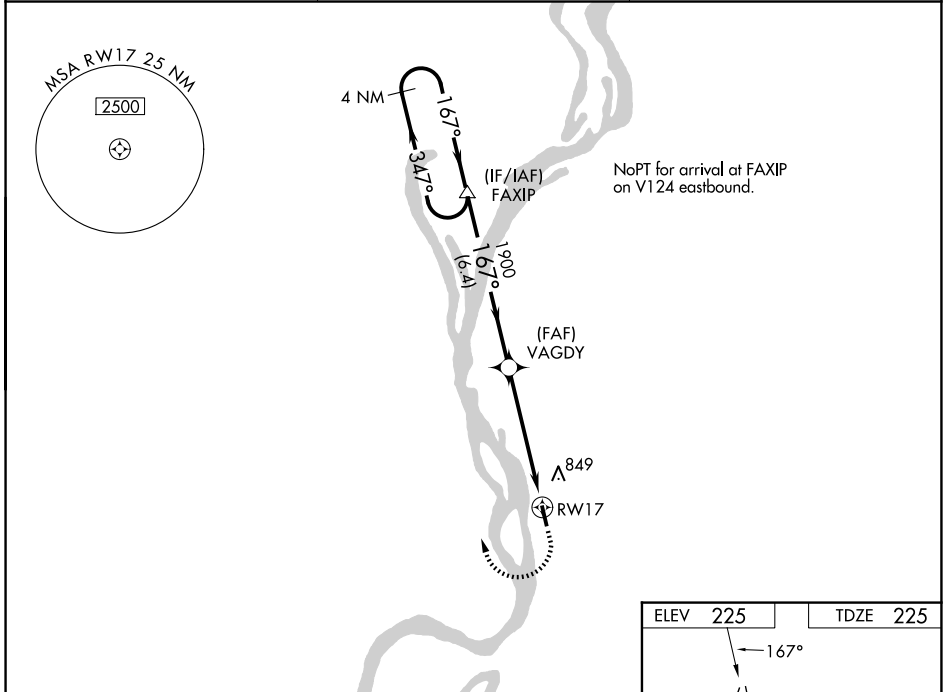
RNAV (GPS) RWY 17

GENERAL DEWITT SPAIN (M01)

▼ Baro-VNAV NA when using Frederick W Smith Intl altimeter setting. For uncompensated Baro-VNAV systems, LNAV/VNAV NA below -15°C (5°F) or above 54°C (130°F).
▲ NA DME/DME RNP-0.3 NA. When local altimeter setting not received, use Frederick W Smith Intl altimeter setting and increase all DA and MDA 40 feet and increase LNAV/VNAV visibility all Cats ¼ mile. Circling Rwy 35 NA at night. Rwy 17, helicopter visibility reduction below ¾ SM NA. Rwy 35, helicopter visibility reduction below 1 SM NA.

MISSED APPROACH:
Climb to 1100 then climbing right turn to 3000 direct FAXIP and hold.

AWOS-3PT 118.35	MEMPHIS APP CON 119.1 291.6	UNICOM 122.7 (CTAF)
---------------------------	---------------------------------------	-------------------------------



CATEGORY	A	B	C	D
LPV DA	475-1	250 (300-1)		NA
LNAV/VNAV DA	1016-3	791 (800-3)		NA
LNAV MDA	1020-1 795 (800-1)	1020-1¼ 795 (800-1¼)	1020-2½ 795 (800-2½)	NA
CIRCLING	1200-1¼ 975 (1000-1¼)	1200-1½ 975 (1000-1½)	1200-3 975 (1000-3)	NA

SE-1, 11 JUN 2026 to 09 JUL 2026

SE-1, 11 JUN 2026 to 09 JUL 2026