

APP CRS	Rwy Idg	2721
001°	TDZE	919
	Apt Elev	919

RNAV (GPS) RWY 36

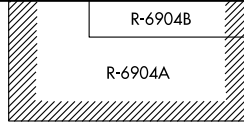
NECEDAH (DAF)

<p>▼ Rwy 36 helicopter visibility reduction below 1 SM NA. DME/DME-0.3 NA. Procedure NA at night. Use Wisconsin Rapids altimeter setting.</p> <p>▲ NA</p>	<p>MISSED APPROACH: Climbing right turn to 2800 direct AJEPO and hold.</p>
---	--

ISW ASOS
126.575

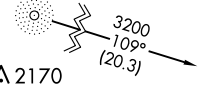
VOL APP CON ★
135.25 244.875

UNICOM
122.7 (CTAF) 0



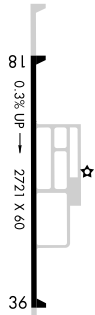
Procedure NA for arrival at bearings from CMY NDB 018 CW 198.

MCCOY
CMY

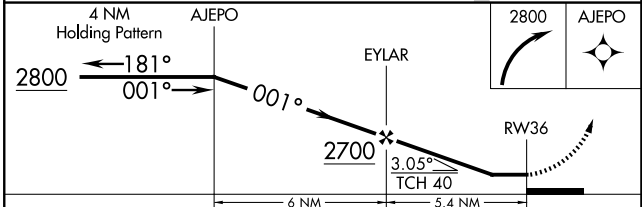
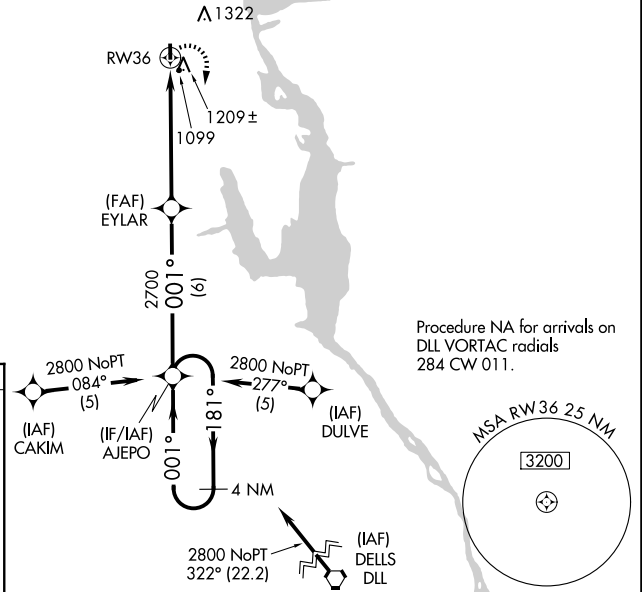


Procedure NA for arrivals on DLL VORTAC radials 284 CW 011.

ELEV 919 TDZE 919



LIRL Rwy 18-36 0



CATEGORY	A	B	C	D
LNAV MDA	1540-1	621 (700-1)		NA
CIRCLING	1580-1 661 (700-1)	1700-1 781 (800-1)		NA

EC-3, 11 JUN 2026 to 09 JUL 2026

EC-3, 11 JUN 2026 to 09 JUL 2026