

VOR/DME CVO 115.4 Chan 101	APP CRS 032°	Rwy Ldg TDZE Apt Elev	N/A N/A 227
--	------------------------	--------------------------	--

VOR-A

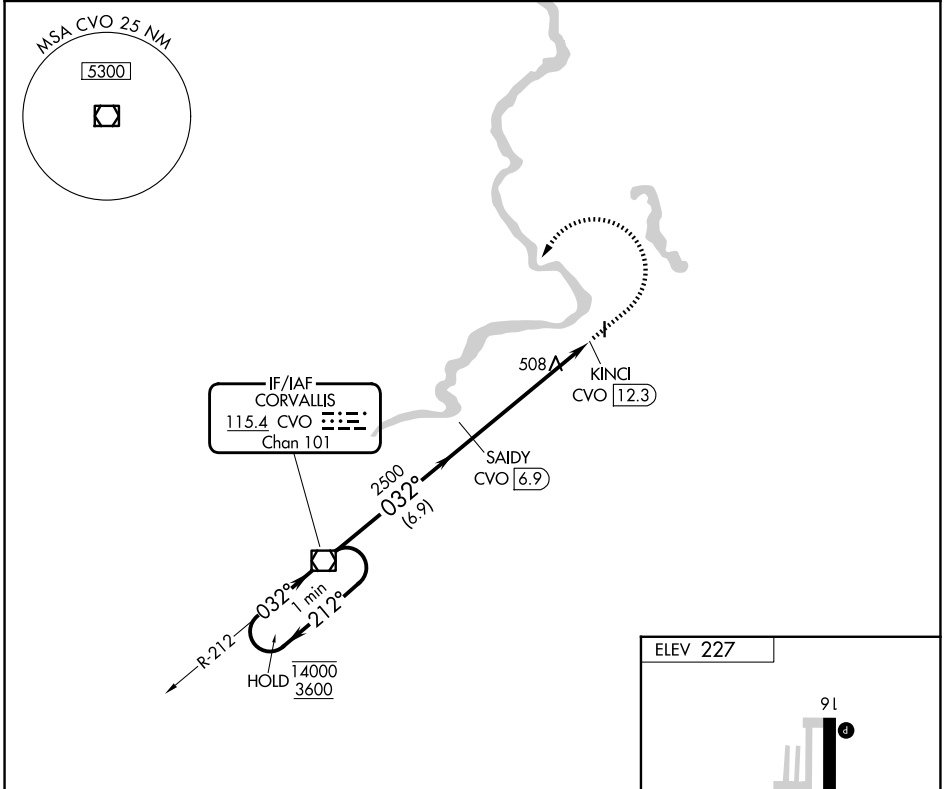
ALBANY MUNI (S12)

DME required.

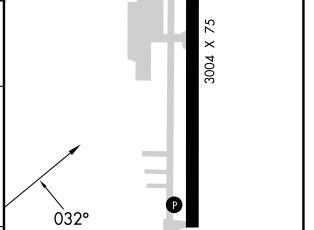
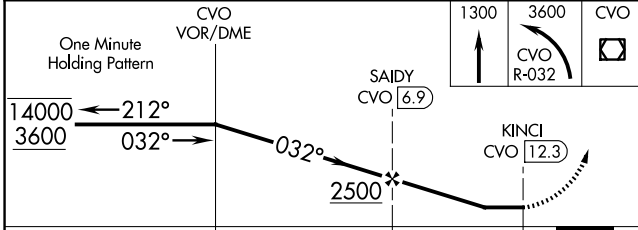
▼ Rwy 16 and 34 helicopter visibility reduction below 1 SM NA. When **▲** NA local altimeter setting not received, use Corvallis altimeter setting.

MISSED APPROACH: Climb to 1300 then climbing left turn to 3600 on CVO VOR/DME R-032 to CVO VOR/DME and hold.

AWOS-3PT 119.925	CASCADE APP CON * 127.5 348.7	UNICOM 122.725 (CTAF) 0
----------------------------	---	-----------------------------------



NoPT for arrival on CVO VOR/DME airway radials R-154 and R-177.



CATEGORY	A	B	C	D
CIRCLING	940-1 713 (800-1)	1020-1 793 (800-1)	NA	

MIRL Rwy 16-34 **0**
REIL Rwy 16 and 34 **0**

NW-1, 11 JUN 2026 to 09 JUL 2026

NW-1, 11 JUN 2026 to 09 JUL 2026