

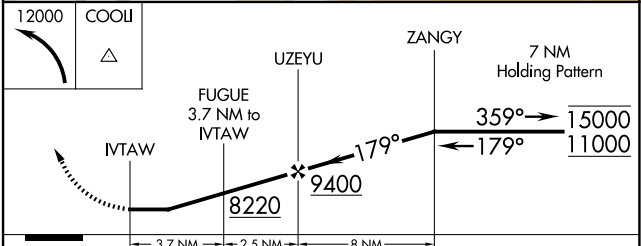
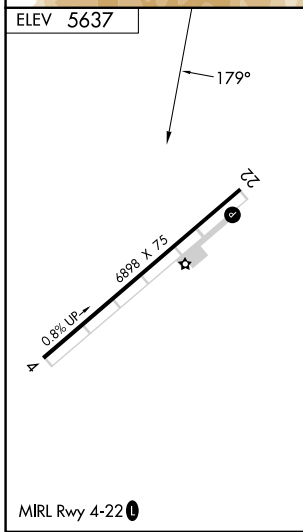
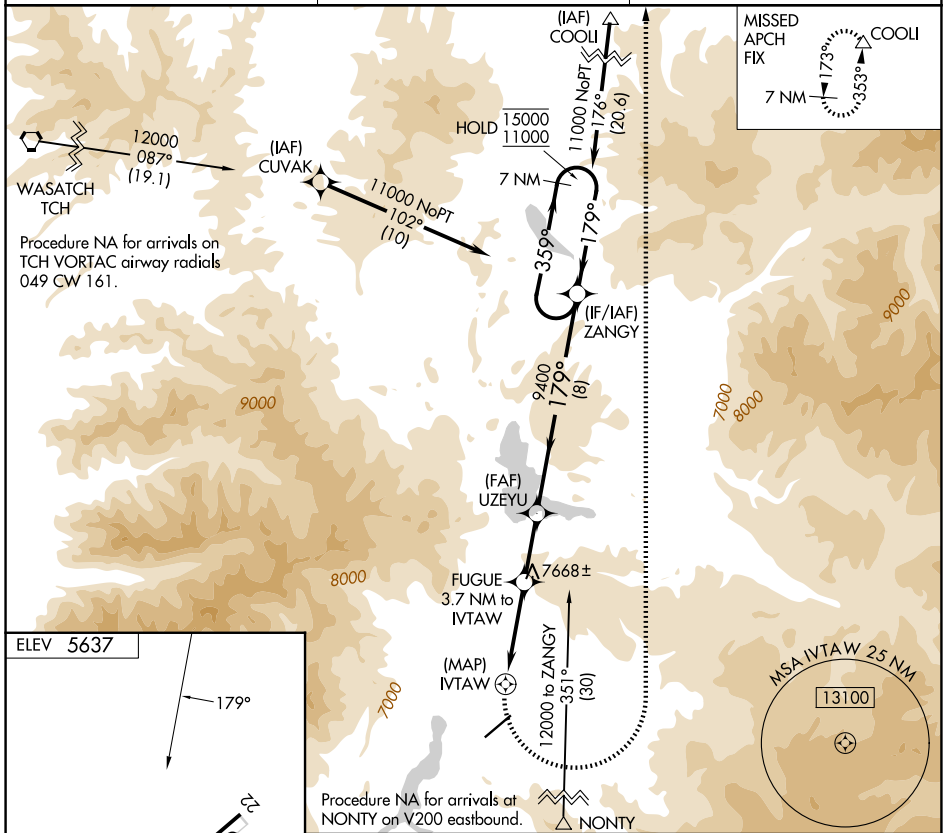
APP CRS <b>179°</b>	Rwy Ldg TDZE Apt Elev	<b>N/A</b> <b>N/A</b> <b>5637</b>
------------------------	-----------------------------	---

# RNAV (GPS)-A

HEBER VALLEY (HCR)

RNP APCH. ▼ ▲ ⊕ -1.6°C	Circling NA south of Rwy 4-22. Circling Rwy 4 NA at night.	MISSED APPROACH: (Do not exceed 210K until turn completion) Climbing left turn to 12000 direct COOLI and hold.
---------------------------------	---	---

AWOS-3PT <b>124.825</b>	SALT LAKE CITY CENTER <b>119.95 377.15</b>	UNICOM <b>122.8 (CTAF)</b>
----------------------------	---	-------------------------------



CATEGORY	A	B	C	D
CIRCLING	8020-1½	2383 (2400-1½)	8020-3 2383 (2400-3)	NA

SW-4, 11 JUN 2026 to 09 JUL 2026

SW-4, 11 JUN 2026 to 09 JUL 2026