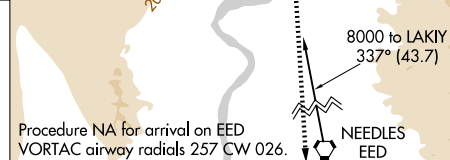
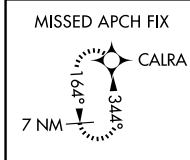
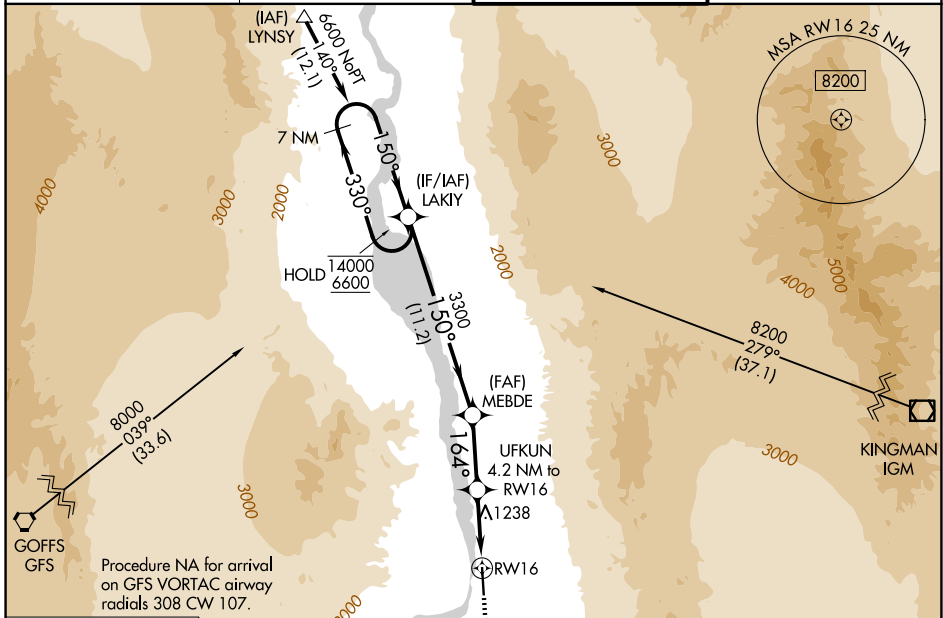


WAAS CH <b>82624</b> <b>W16A</b>	APP CRS <b>164°</b>	Rwy Ldg TDZE Apt Elev	<b>8500</b> <b>646</b> <b>707</b>
--	------------------------	-----------------------------	---

# RNAV (GPS) RWY 16

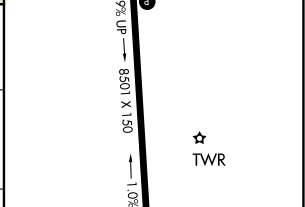
LAUGHLIN/BULLHEAD INTL (IFP)

RNP APCH - GPS.		MISSED APPROACH: Climb to 6300 direct CALRA and hold, continue climb-in-hold to 6300.	
<p>Procedure NA at night. Rwy 16 helicopter visibility reduction below 3/4 SM NA. Baro-VNAV NA.</p>			
ATIS <b>119.825</b>	LOS ANGELES CENTER <b>134.65 360.65</b>	BULLHEAD TOWER★ <b>123.9 (CTAF) 0</b>	GND CON <b>118.25</b>



ELEV 707	<b>D</b>	TDZE 646
----------	----------	----------

7 NM Holding Pattern	LAKIY	MEBDE	UFKUN 4.2 NM to RWY 16	CALRA
14000 ← 330° 6600 → 150°			2.6 NM to RWY 16	
GP 3.00° TCH 49				
	11.2 NM	4 NM	1.7 NM	2.6 NM



CATEGORY	A	B	C	D
LPV DA		1048-1 1/8	402 (400-1 1/8)	
LNAV/VNAV DA		1500-2 1/2	854 (800-2 1/2)	
LNAV MDA	1500-1 854 (800-1)	1500-1 1/4 854 (800-1 1/4)	1500-2 1/2	854 (800-2 1/2)
CIRCLING	1500-1 793 (800-1)	1560-1 1/4 853 (900-1 1/4)	1800-3 1093 (1100-3)	2340-3 1633 (1700-3)

REIL Rwy 16 and 34  
MIRL Rwy 16-34

SW-4, 11 JUN 2026 to 09 JUL 2026

SW-4, 11 JUN 2026 to 09 JUL 2026