

WAAS CH <b>78115</b> <b>W18A</b>	APP CRS <b>185°</b>	Rwy Idg TDZE Apt Elev	<b>5001</b> <b>454</b> <b>458</b>
--	------------------------	-----------------------------	---

# RNAV (GPS) RWY 18

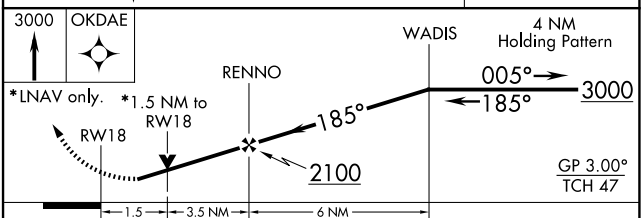
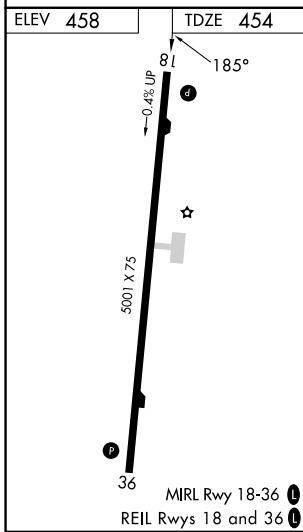
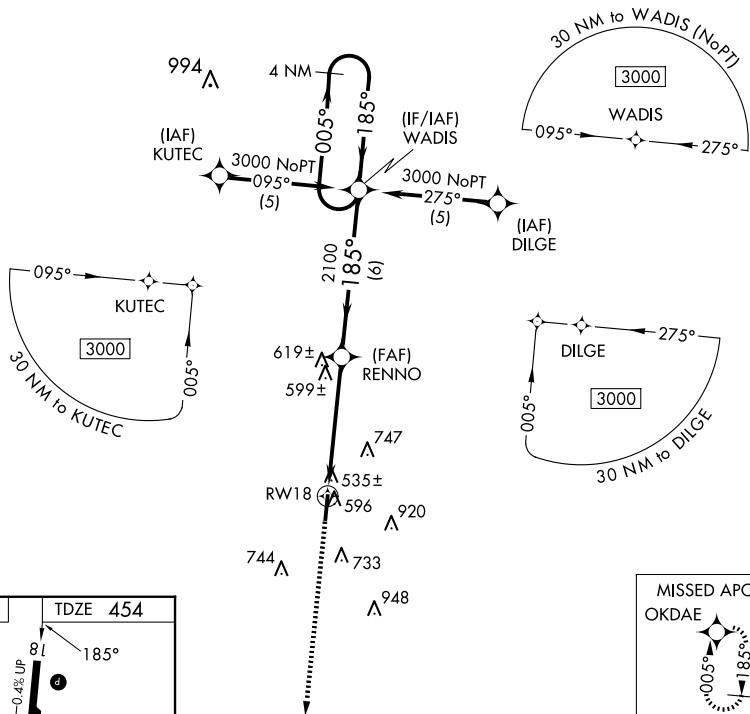
PHILADELPHIA MUNI (MPPE)

**⚠** For uncompensated Baro-VNAV systems, LNAV/VNAV NA below -15°C (5°F) or above 48°C (118°F). DME/DME RNP-0.3 NA. Visibility reduction by helicopters NA.

**⚠** When local altimeter setting not received, use Key Fld altimeter setting and increase all DA 101 feet and all MDA 120 feet and increase LPV all Cats, LNAV Cat C and Circling Cats C and D visibility ¼ mile, increase LNAV/VNAV all Cats, LNAV Cat D visibility ½ mile. Baro-VNAV and VDP NA when using Key Fld altimeter setting.

**MISSED APPROACH:**  
Climb to 3000 direct OKDAE and hold.

AWOS-3P <b>118.725</b>	MEMPHIS CENTER <b>132.75 263.0</b>	UNICOM <b>123.0 (CTAF) 0</b>
---------------------------	---------------------------------------	---------------------------------



CATEGORY	A	B	C	D
LPV DA	774-1¼ 320 (400-1¼)			
LNAV/VNAV DA	850-1½ 396 (400-1½)			
LNAV MDA	960-1 506 (600-1)		960-1½ 506 (600-1½)	
CIRCLING	1060-1 602 (700-1)		1280-2½ 822 (900-2½) 1280-2¾ 822 (900-2¾)	

SC-4, 11 JUN 2026 to 09 JUL 2026

SC-4, 11 JUN 2026 to 09 JUL 2026