

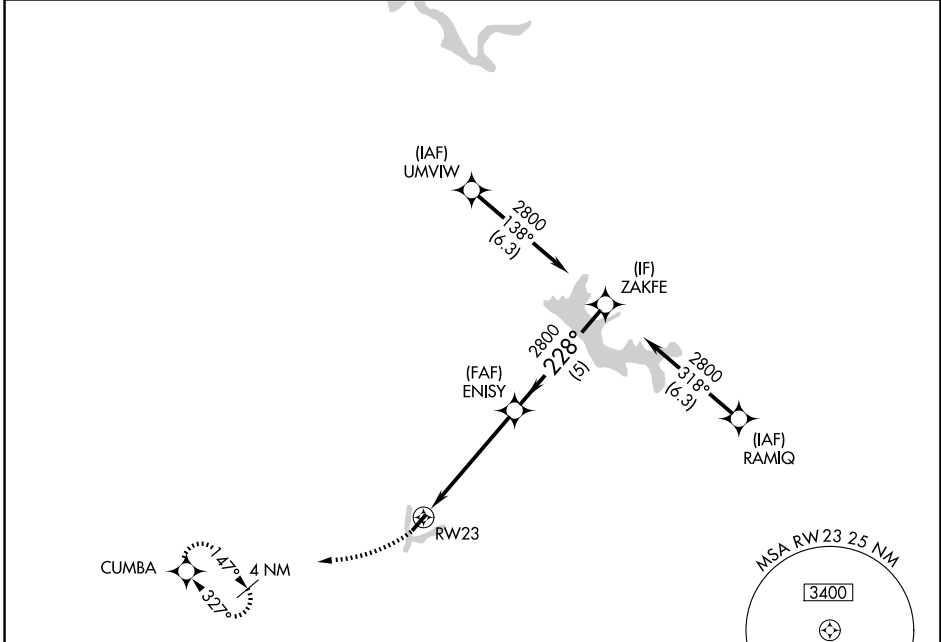
WAAS CH 48841 W23A	APP CRS 228°	Rwy Ldg TDZE Apt Elev	3398 878 879
--	------------------------	-----------------------------	---

RNAV (GPS) RWY 23

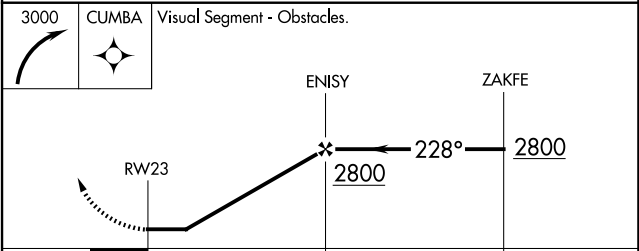
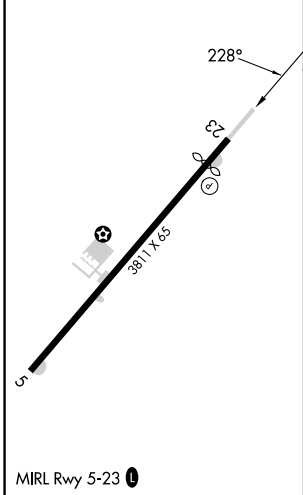
NOBLE COUNTY (I10)

RNP APCH - GPS.	MISSED APPROACH: Climbing right turn to 3000 direct CUMBA and hold.
<p>Procedure NA at night. Rwy 23 helicopter visibility reduction below 1 SM NA. Use ZZY altimeter setting; when not received, procedure NA.</p>	

ZZY ASOS 127.0	INDIANAPOLIS CENTER 124.45 323.275	UNICOM 122.8 (CTAF)	122.7 0
--------------------------	--	-------------------------------	----------------



ELEV 879	TDZE 878
----------	----------



CATEGORY	A	B	C	D
LP MDA	1580-1	702 (800-1)	1580-2 702 (800-2)	NA
LNAV MDA	1620-1 742 (800-1)	1620-1¼ 742 (800-1¼)	1620-2 742 (800-2)	NA
CIRCLING	1620-1 741 (800-1)	1620-1¼ 741 (800-1¼)	1660-2¼ 781 (800-2¼)	NA

EC-2, 11 JUN 2026 to 09 JUL 2026

EC-2, 11 JUN 2026 to 09 JUL 2026