

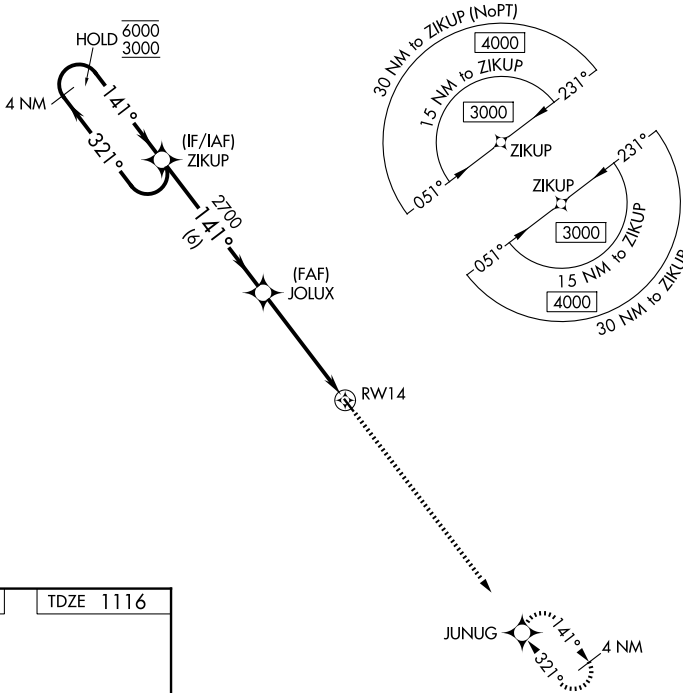
APP CRS	Rwy Ldg	2827
141°	TDZE	1116
	Apt Elev	1116

RNAV (GPS) RWY 14

WINTERSET MUNI (3Y3)

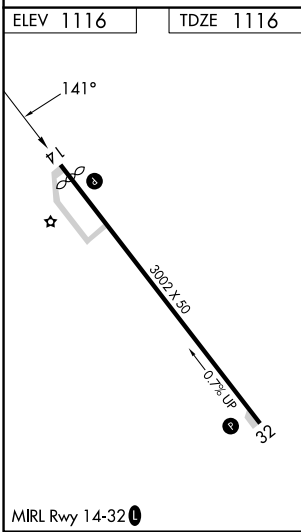
RNP APCH.	<p>▼ Circling NA for Cat B southwest of Rwy 14-32. Procedure NA at night.</p> <p>▲ NA Rwy 14 helicopter visibility reduction below 1 SM NA. Use Osceola altimeter setting.</p>	MISSED APPROACH: Climb to 3000 direct JUNUG and hold.
-----------	--	---

I75 AWOS-3 120.975	DES MOINES APP CON 123.9 360.7	UNICOM 122.7 (CTAF) 0
------------------------------	--	---------------------------------



NC-3, 11 JUN 2026 to 09 JUL 2026

NC-3, 11 JUN 2026 to 09 JUL 2026



4 NM Holding Pattern				VGSi and descent angles not coincident (VGSi Angle 3.00/TCH 32).		3000	JUNUG
6000 ← 321°				141° →		↑	✧
3000				2700			
6 NM				4.9 NM			
CATEGORY	A	B	C	D			
LNAV MDA	1640-1	524 (600-1)	NA				
CIRCLING	1640-1	1700-1	NA				
	524 (600-1)	584 (600-1)					