

APP CRS	Rwy Ldg	<b>3901</b>
<b>128°</b>	TDZE	<b>933</b>
	Apt Elev	<b>933</b>

# RNAV (GPS) RWY 13

CASSELTON ROBERT MILLER RGNL (5N8)

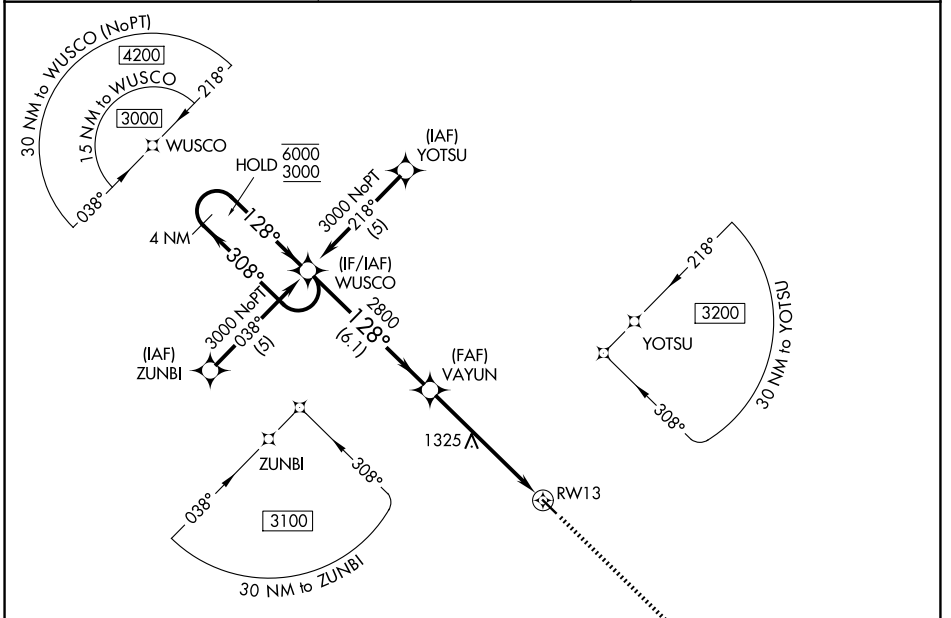
RNP APCH.  
 ▼ Rwy 13 helicopter visibility reduction below 3/4 SM NA. Use Fargo altimeter setting; when not received use Morehead altimeter setting and increase all MDA 20 feet.  
 ▲ NA

MISSED APPROACH: Climb to 3000 direct JINPU and hold.

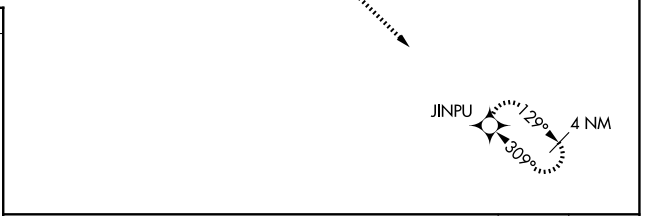
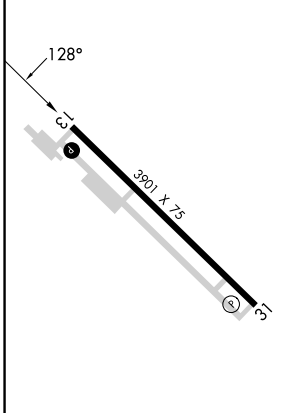
FAR ASOS  
**124.5 379.2**

FARGO APP CON  
**120.4 377.15**

UNICOM  
**122.8 (CTAF) ①**



ELEV 933	TDZE 933
----------	----------



4 NM Holding Pattern				VGSi and descent angles not coincident (VGSi Angle 3.00/TCH 21).		3000	JINPU
6000 ← 308°				128° →		↑	✧
3000				2800			
6.1 NM				5.7 NM			
CATEGORY	A	B	C	D			
LNAV MDA	1620-1	687 (700-1)	1620-2 687 (700-2)	NA			

REIL Rwy 31 ①  
 MIRL Rwy 13-31 ①

NC-1, 11 JUN 2026 to 09 JUL 2026

NC-1, 11 JUN 2026 to 09 JUL 2026