

WAAS CH <b>56605</b> <b>W05A</b>	APP CRS <b>047°</b>	Rwy Ldg TDZE <b>1220</b> Apt Elev <b>1220</b>
--	------------------------	---

# RNAV (GPS) RWY 5

CHEROKEE COUNTY RGNL (CNI)

RNP APCH-GPS.

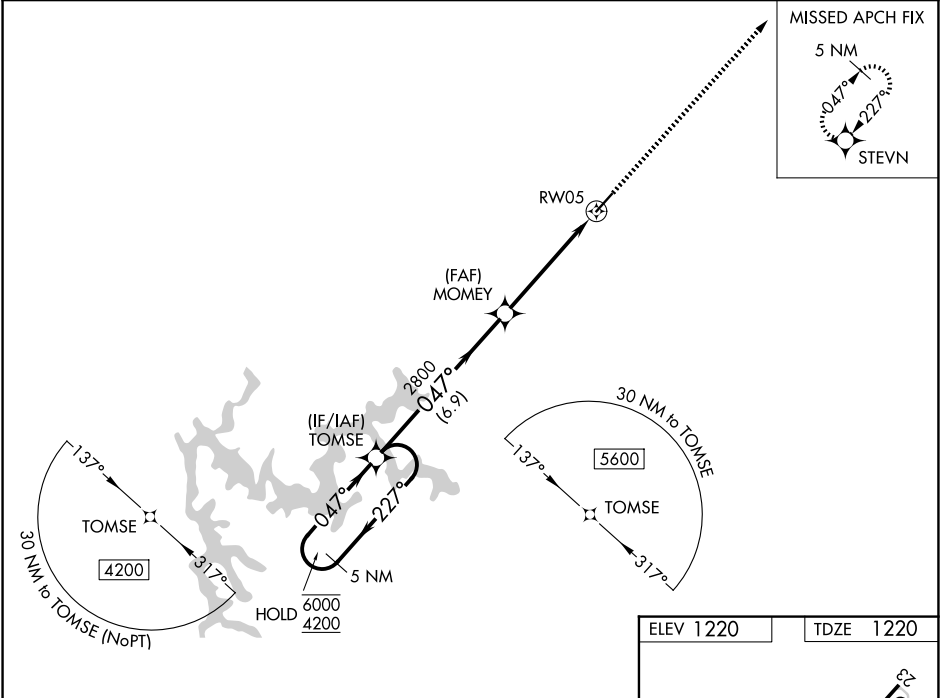
**▽** For uncompensated Baro-VNAV systems, LNAV/VNAV NA below -17°C or above 54°C.  
**▲**

MISSED APPROACH: Climb to 6000 direct STEVN and hold, continue climb-in-hold to 6000.

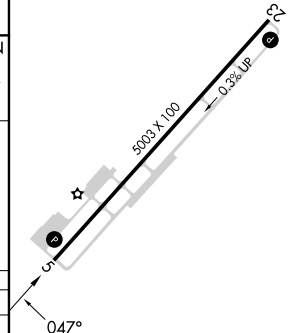
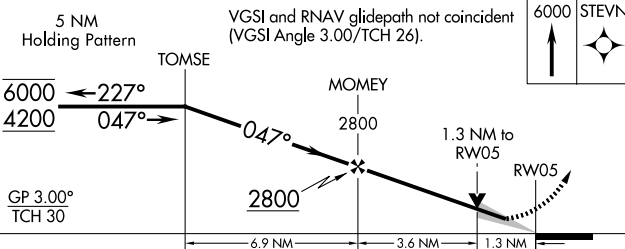
AWOS-3PT  
**119.825**

ATLANTA APP CON  
**121.0 268.7**

UNICOM  
**123.0 (CTAF) 0**



ELEV 1220 TDZE 1220



CATEGORY	A	B	C	D
LPV DA		1470- <sup>3</sup> / <sub>4</sub>	250 (300- <sup>3</sup> / <sub>4</sub> )	
LNAV/VNAV DA		1555-1	335 (400-1)	
LNAV MDA	1640-1	420 (500-1)	1640-1 <sup>1</sup> / <sub>8</sub>	420 (500-1 <sup>1</sup> / <sub>8</sub> )
CIRCLING	1720-1	500 (600-1)	1820-1 <sup>1</sup> / <sub>2</sub> 600 (700-1 <sup>1</sup> / <sub>2</sub> )	2040-2 <sup>3</sup> / <sub>4</sub> 820 (900-2 <sup>3</sup> / <sub>4</sub> )

REIL Rwy 5 and 23 0  
MIRL Rwy 5-23 0

SE-4, 11 JUN 2026 to 09 JUL 2026

SE-4, 11 JUN 2026 to 09 JUL 2026