

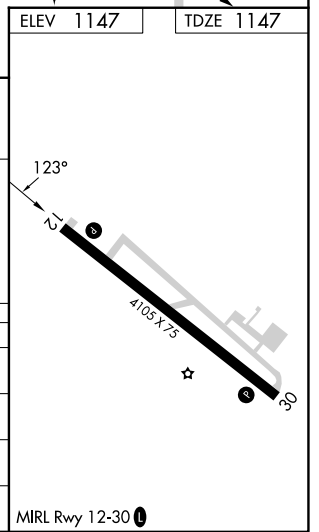
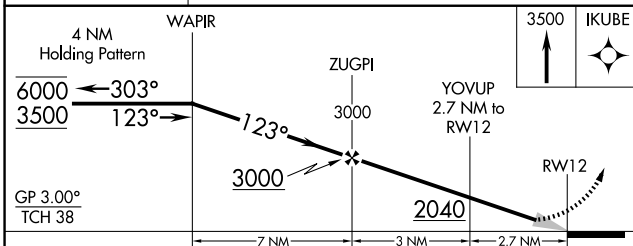
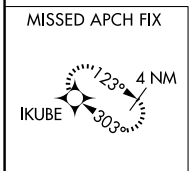
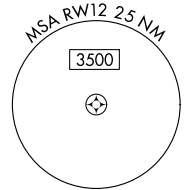
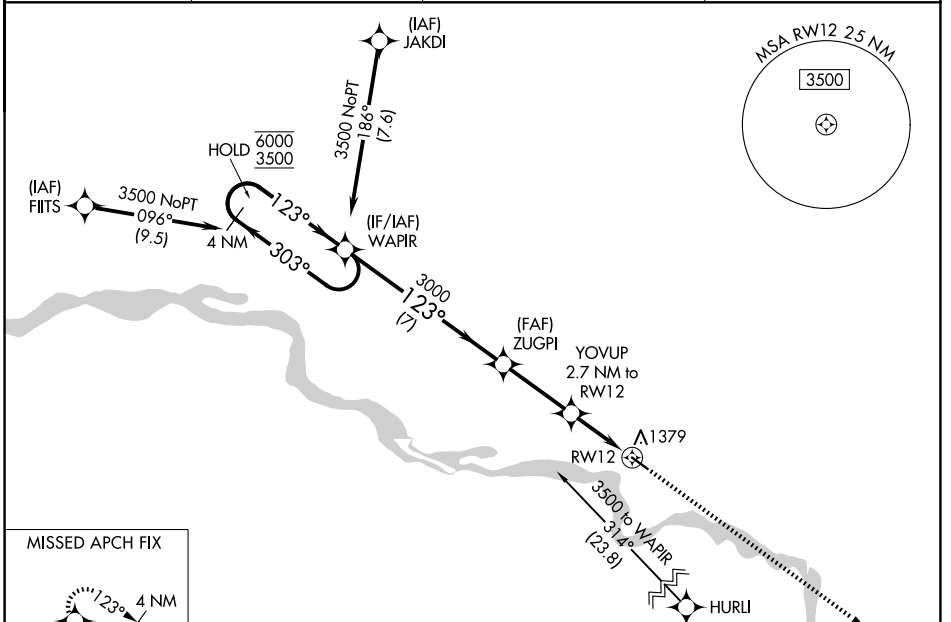
WAAS CH <b>72836</b> <b>W12A</b>	APP CRS <b>123°</b>	Rwy Ldg TDZE Apt Elev	<b>4105</b> <b>1147</b> <b>1147</b>
--	------------------------	-----------------------------	---

# RNAV (GPS) RWY 12

HAROLD DAVIDSON FLD (VMR)

RNP APCH - GPS.		MISSED APPROACH: Climb to 3500 direct IKUBE and hold.
Baro-VNAV NA. Use Yankton altimeter setting.		

AWOS-3P <b>118.65</b>	YKN AWOS-3PT <b>119.05</b>	SIoux CITY APP CON★ <b>124.6 307.0</b>	AUNICOM <b>122.8 (CTAF)</b>
--------------------------	-------------------------------	---	--------------------------------



CATEGORY	A	B	C	D
LPV DA	1470-1 323 (400-1)			NA
LNAV/VNAV DA	1659-1½ 512 (600-1½)			NA
LNAV MDA	1700-1 553 (600-1)	1700-1⅝ 553 (600-1⅝)		NA
CIRCLING	1760-1 613 (700-1)	1900-2¼ 753 (800-2¼)		NA

NC-1, 11 JUN 2026 to 09 JUL 2026

NC-1, 11 JUN 2026 to 09 JUL 2026