

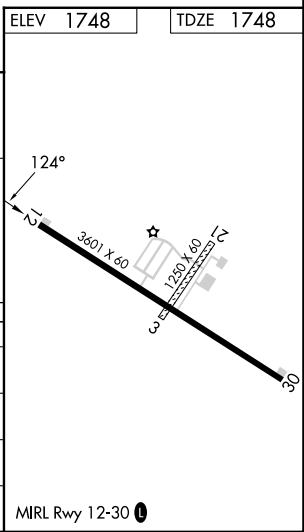
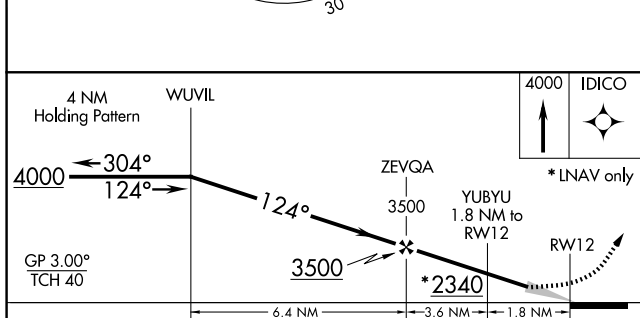
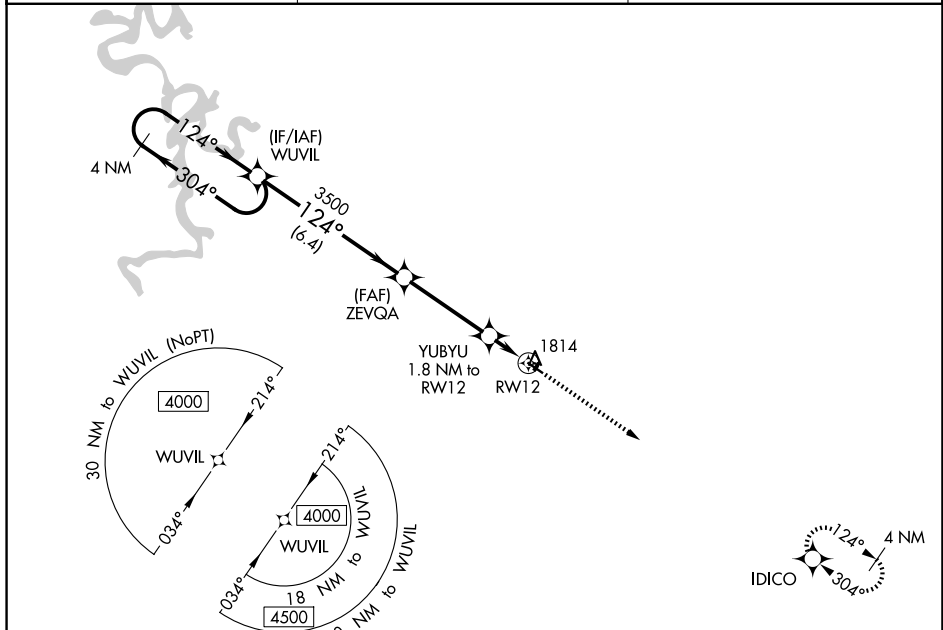
WAAS CH <b>69331</b> <b>W12A</b>	APP CRS <b>124°</b>	Rwy Ldg TDZE Apt Elev	<b>3601</b> <b>1748</b> <b>1748</b>
--	------------------------	-----------------------------	---

# RNAV (GPS) RWY 12

HUNTSVILLE MUNI (H34)

RNP APCH - GPS.	Baro-VNAV NA. Use Springdale altimeter setting; when not received, use Drake Fld altimeter setting and increase all DA 18 feet and all MDA 20 feet; increase LPV all Cats, LNAV/VNAV all Cats and LNAV Cat C visibilities ½ mile. Circling NA to Rwy's 3 and 21.	MISSED APPROACH: Climb to 4000 direct IDICO and hold.
-----------------	--	--

ASG AWOS-3 <b>124.675</b>	RAZORBACK APP CON ★ <b>126.6 305.2</b>	UNICOM <b>122.8 (CTAF) 0</b>
------------------------------	---	---------------------------------



CATEGORY	A	B	C	D
LPV DA	2097-1½ 349 (400-1½)			NA
LNAV/VNAV DA	2097-1½ 349 (400-1½)			NA
LNAV MDA	2180-1	432 (500-1)	2180-1¼ 432 (500-1¼)	NA
CIRCLING	2280-1 532 (600-1)	2520-1 772 (800-1)	2520-2¼ 772 (800-2¼)	NA

SC-1, 11 JUN 2026 to 09 JUL 2026

SC-1, 11 JUN 2026 to 09 JUL 2026