

WAAS CH 78135 W18A	APP CRS 179°	Rwy Ldg TDZE Apt Elev	6000 1350 1350
---------------------------------	------------------------	-----------------------------	---

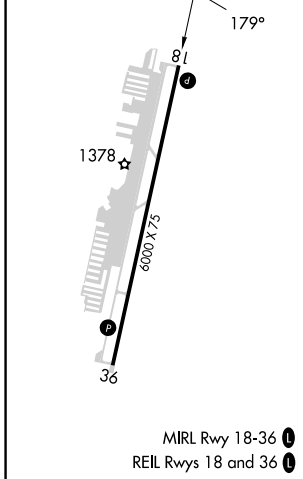
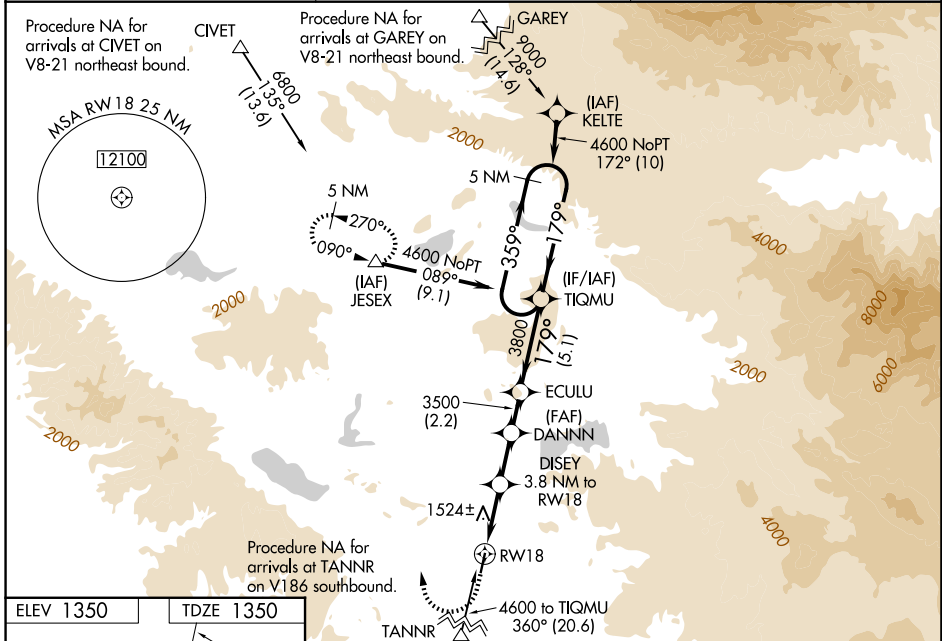
RNAV (GPS) RWY 18

FRENCH VALLEY (F70)

NA DME/DME RNP-0.3 NA. Baro-VNAV and VDP NA with Ramona altimeter setting. Circling NA west of Rwy 18-36. For uncompensated Baro-VNAV systems, LNAV/VNAV NA below -17°C (2°F) or above 54°C (130°F). When local altimeter setting not received use Ramona altimeter setting: increase LPV DA to 1685 feet and all visibilities ¼ mile, LNAV/VNAV DA to 1955 feet and all visibilities ¾ mile, all MDA 80 feet and LNAV visibility Cat B ¼ mile, Cat C ⅓ mile, and Circling visibility Cat C ¼ mile. Helicopter visibility reduction below ¾ SM NA.

MISSED APPROACH: Climb to 2500 then climbing right turn to 5000 direct JESEX and hold.

AWOS-3 119.025	MARCH APP CON* 133.5 306.975	UNICOM 122.8 (CTAF)
--------------------------	--	-------------------------------



2500	5000	JESEX						
*LNAV only		DISEY 3.8 NM to RW18	DANNN 3500	ECULU 3800	TIQMU 4600	5 NM Holding Pattern		
1.2 NM to RW18		2600	3500	3800	4600			GP 3.00° TCH 40
1.2 NM		2.6 NM	2.8 NM	2.2 NM	5.1 NM			
CATEGORY	A	B	C	D				
LPV DA		1600-7/8	250 (300-7/8)					NA
LNAV/VNAV DA		1871-13/4	521 (600-13/4)					NA
LNAV MDA		1780-1	430 (500-1)	1780-11/4	430 (500-11/4)			NA
CIRCLING		2020-1	670 (700-1)	2060-2	710 (800-2)			NA

SW-3, 11 JUN 2026 to 09 JUL 2026

SW-3, 11 JUN 2026 to 09 JUL 2026