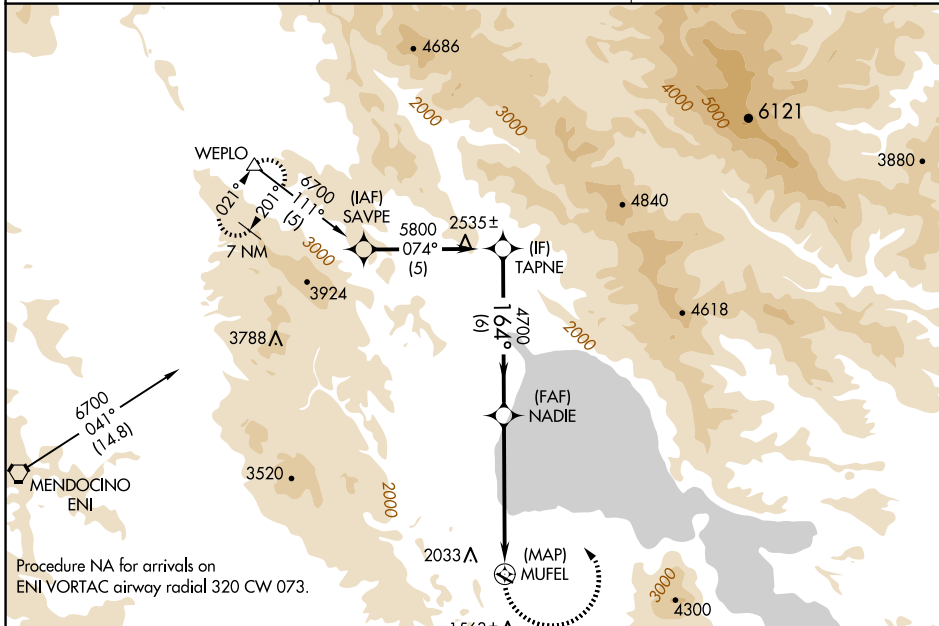


APP CRS 164°	Rwy Idg TDZE Apt Elev	N/A N/A 1380
------------------------	-----------------------------	---

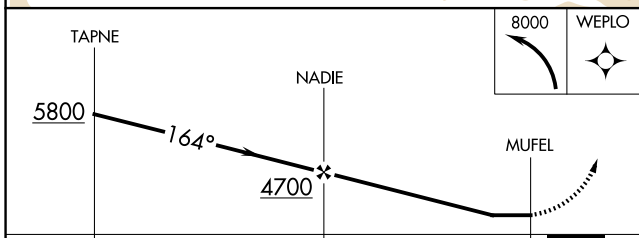
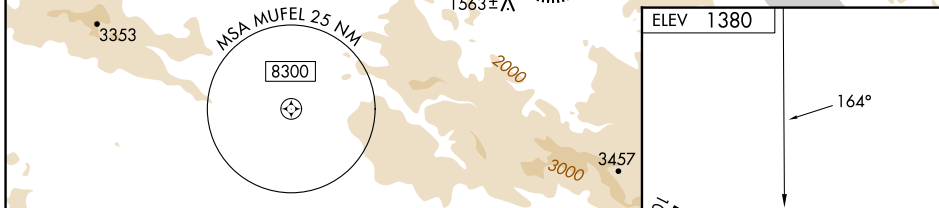
RNAV (GPS)-A

LAMPSON FLD (102)

<p>NA</p> <p>Circling NA south of Rwy 10-28. DME/DME RNP-0.3 NA. Procedure NA at night. When local altimeter setting not received, use Ukiah altimeter setting and increase all MDA 560 feet.</p>	<p>MISSED APPROACH: Climbing left turn to 8000 direct WEPLO and hold.</p>	
<p>AWOS-3 118.35</p>	<p>OAKLAND CENTER 127.8 353.5</p>	<p>UNICOM 122.8 (CTAF)</p>



Procedure NA for arrivals on ENI VORTAC airway radial 320 CW 073.



CATEGORY	A	B	C	D
CIRCLING	2580-1¼ 1200 (1200-1¼)	2580-1½ 1200 (1200-1½)		NA

ELEV 1380

164°

10

3600 X 60

0.3% UP

28

MIRL Rwy 10-28

SW-2, 11 JUN 2026 to 09 JUL 2026

SW-2, 11 JUN 2026 to 09 JUL 2026