

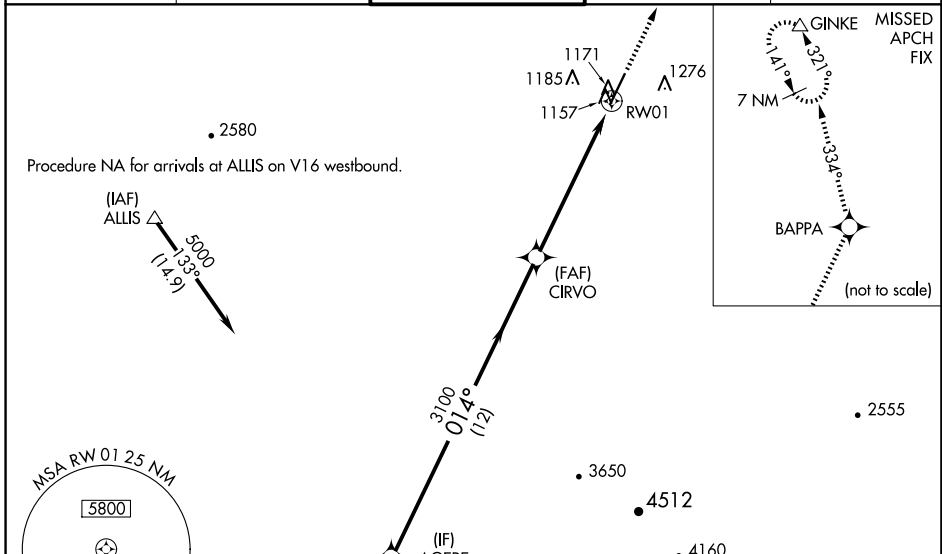
WAAS CH 90306 W01A	APP CRS 014°	Rwy Idg TDZE 1049 Apt Elev 1071	6279
--	------------------------	---	-------------

RNAV (GPS) RWY 1

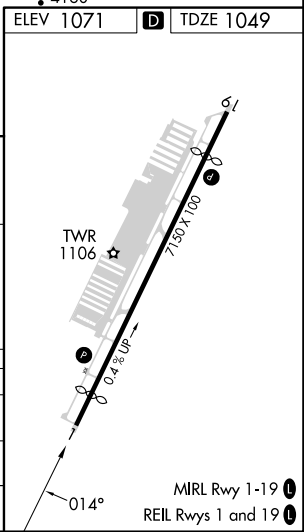
GLENDALE RGNL (GEU)

RNP APCH.		<p>⚠ Baro-VNAV NA when using Phoenix Sky Harbor Intl altimeter setting. For uncompensated Baro-VNAV systems, LNAV/VNAV NA below -17°C or above 47°C. When local altimeter setting not received, use Phoenix Sky Harbor Intl altimeter setting; increase LPV DA to 1438 feet; increase LNAV/VNAV DA to 1517 feet and all visibilities ¼ SM; increase all MDA 60 feet and LNAV Cat C and D visibility ¼ SM. Night landing: Rwy 1, Cat C and D operational VGSi required, remain on or above VGSi glidepath until threshold. Rwy 1 helicopter visibility reduction below ¾ SM NA.</p>	<p>MISSED APPROACH: Climb to 10000 direct BAPPA and on 334° track to GINKE and hold, continue climb-in-hold to 10000.</p>

ATIS 119.425	LUKE APP CON * 118.15 363.125	GLENDALE TOWER * 121.0 (CTAF) 0	GND CON 118.0	UNICOM 122.95
------------------------	---	---	-------------------------	-------------------------



Procedure Turn NA		AGERE	10000	BAPPA	GINKE
			↑	✧	△
				334° tr	
GP 3.00° TCH 40		AGERE	CIRVO	RWY 1	
		5000	3100		
		014°			
		12 NM	6.2 NM		
CATEGORY	A	B	C	D	
LPV DA		1378-1¼	329 (400-1¼)		
LNAV/VNAV DA		1457-1½	408 (400-1½)		
LNAV MDA	1440-1	391 (400-1)	1440-1⅛ 391 (400-1⅛)	1440-1¼ 391 (400-1¼)	



SW-4, 11 JUN 2026 to 09 JUL 2026

SW-4, 11 JUN 2026 to 09 JUL 2026