

WAAS CH <b>69438</b> <b>W10A</b>	APP CRS <b>096°</b>	Rwy Ldg TDZE Apt Elev	<b>5002</b> <b>240</b> <b>240</b>
--	------------------------	-----------------------------	---

# RNAV (GPS) RWY 10

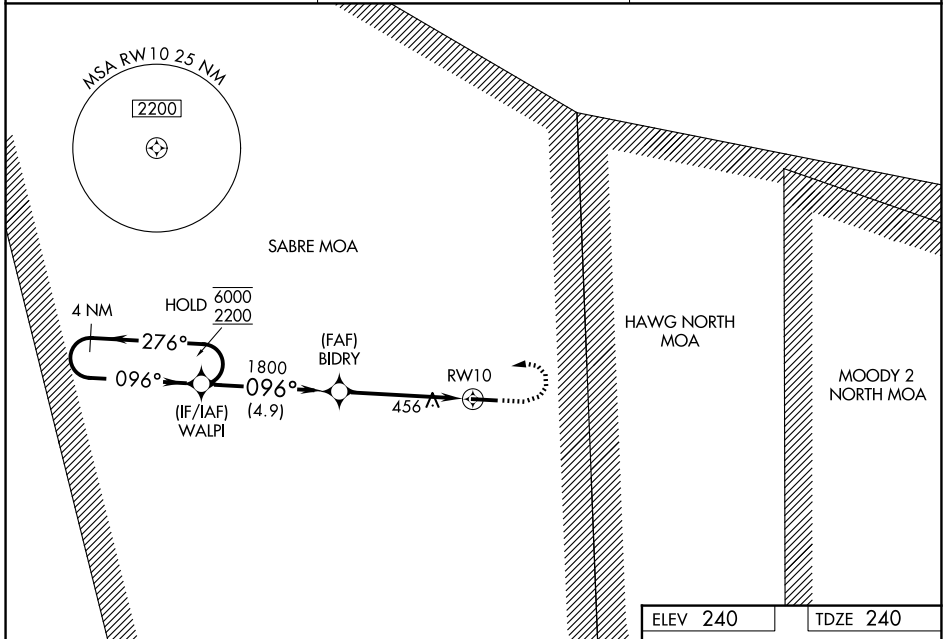
BERRIEN COUNTY (4J2)

RNP APCH - GPS

**⚠** Baro-VNAV NA. Rwy 10 helicopter visibility reduction below 3/4 SM NA. Circling Rwy 28 NA at night. Use VAD altimeter setting; when not received, use DQH altimeter setting and increase LPV DA to 584 feet; increase LNAV/VNAV DA to 800 feet and all visibilities 1/4 SM; increase all MDAs 40 feet and LNAV visibility Cat C 1/4 SM, and Circling visibility Cat C 1/4 SM.

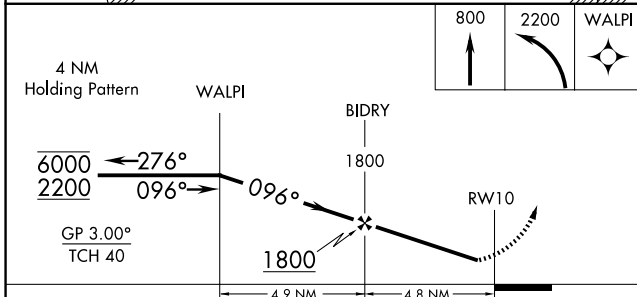
**MISSED APPROACH:** Climb to 800 then climbing left turn to 2200 direct WALPI and hold.

KVAD ATIS ★ <b>142.6 273.5</b>	VALDOSTA APP CON ★ <b>126.6 285.6</b>	UNICOM <b>122.7 (CTAF) 0</b>
-----------------------------------	--	---------------------------------



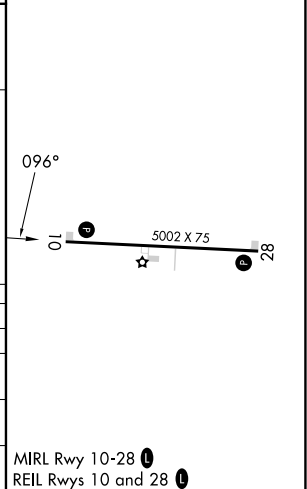
SE-4, 11 JUN 2026 to 09 JUL 2026

SE-4, 11 JUN 2026 to 09 JUL 2026



ELEV 240	TDZE 240
----------	----------

CATEGORY	A	B	C	D
LPV DA		560-1	320 (400-1)	NA
LNAV/VNAV DA		760-1 3/8	520 (600-1 3/8)	NA
LNAV MDA	760-1	520 (600-1)	760-1 3/8 520 (600-1 3/8)	NA
CIRCLING	820-1	580 (600-1)	980-2 740 (800-2)	NA



MIRL Rwy 10-28 0  
REL Rwy 10 and 28 0